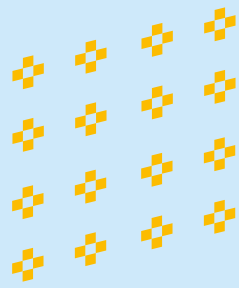


# Prospectus

2021/22



**Longley Park**  
**SIXTH FORM**



# Welcome to PROJECT

At Longley Park, we do more than simply get you through exams – we help you define your unique goals.

Whether you're aiming for university, or are ready to train for a career, it's time to start working on you.

# YOU

The best  
project you'll  
ever work on



# How to find us

Longley Park Sixth Form is on Barnsley Road, opposite Longley Park itself. There are fantastic bus links into the city centre, across Sheffield and to Meadowhall.

Travel information about services, discounts and concessions available to students attending Longley Park Sixth Form is available from Student Services.

For further information, please visit our website at [www.longleypark.ac.uk](http://www.longleypark.ac.uk)



Dream big.  
Aim high.  
Reach further.



## 10 BEST Things about Longley

- 1 Access to the Independent Learning Centre;** a designated space that students can do some independent learning!
- 2 Each student at Longley has access to an Academic Tutor.** Tutors support both the academic side of things as well as all the extracurricular activities.
- 3 Career Ready!** A scheme designated to provide students with vital work experience in alliance with the courses you are studying! Longley Park are the ONLY local provider of this, so make sure to take advantage!
- 4 Our commitment to supporting positive student wellbeing.** We have a specially designed wellbeing space where you can get 1:1 support sessions for issues effecting your life, both in and out of sixth form.
- 5 The ability to go from Level 1 pathways all the way through to Level 3** (BTEC Diplomas and A-Levels)
- 6 Our experienced and dedicated Learning Support team.** These guys ensure that EVERY student has the right skills and competencies to get through your qualifications.
- 7 Wider Opportunities.** As much as getting through your qualifications is crucial to your own personal development, we see access to extracurricular activities such as our Debating Society, Student Ambassador programme and Student Council just as pivotal to reaching your potential!
- 8 Extended Project Qualifications.** This Level 3 research driven course is a GREAT opportunity for high achievers to get a real glimpse of what University Learning is really like!
- 9 Our Staff.** Without the endless support and tireless work our staff put in every day, Longley wouldn't be what it is. Plain and Simple!
- 10 Trips!** Each year we organise for our students to go to places like Berlin and London. We regularly take our students to university open days so students can get a real feel for university life!

## Mo's Welcome

### WELCOME TO PROJECT YOU!

**Choosing where to study after GCSEs is always a big decision. This year it might feel even harder because we have all experienced such an unusual time. Your studies will have been disrupted, you will have spent a lot of time out of school and you will have missed your friends and teachers. I hope that you have been able to keep up with your subjects through online learning and that you have had plenty of advice about what to do next. Now we want to make your transition to post-16 study as easy and exciting as possible! At Longley Park we understand that everyone has their own unique goals and it's our job to make sure that you achieve yours.**

That's why we talk about Project You – we help you to be the best possible version of yourself. You might be aiming for a place at a top university or planning to train for a career straight away. Whatever you want to achieve, we'll support you every step of the way. Project You starts now.

Exam results are important, and we'll make sure you get the best possible teaching to inspire you. But Project You is about more than exams. It's about broadening your horizons, learning new skills, finding out what your ambitions really are – and how to achieve them.

### A step up from school

As a Sixth Form, we're all about providing an amazing place for 16-19 year olds to study. It's a place to meet new friends from lots of different backgrounds, and to work with people who share your passion for your chosen subjects.

Most importantly it's a place to take control of your future and make your own decisions. It's more independent than school, but with lots of support to help you do your very best.

### Learn outside the classroom

Longley Park is an exciting mix of ideas, beliefs, cultures and languages – just like the world. It's a perfect example of the great ideas that can come to life when we listen to each other, share opinions and work together. We'd love you to join us.

This guide includes details of our courses. If you like what you see and want more information then visit our website, come along to an open event or give us a ring to arrange a visit and take your first step in planning your future.

We really look forward to meeting you!

**Mo Nisbet**  
Principal





# Why study with us?

## Our Results

- 98% Advanced Level Pass Rate overall
- 210 passes at A\* and Distinction\*
- Over 85% of students attending university

## Our Key Values

- Support
- Results
- Diversity

## OPEN DAYS

**Saturday  
17th October 2020**

Also follow us on Instagram & Facebook or visit [longleypark.ac.uk](http://longleypark.ac.uk) for extra dates and virtual open days

## What our students say about us...

**"Longley gives you freedom for the full expression of your personality."**

Anita Brigidi

"I came to Longley as a kid who didn't know much about the outside world and left as a man ready to be a leader in the outside world."

Tyrone Yeboah

"Longley supports your independent learning. The Independent Learning Centre is an amazing resource to help me do this!"

Sherin Matthews

## What Ofsted say about us...

"Teachers have high expectations of students and teaching, learning and assessment are now consistently good."

**"There is a strong culture of valuing the individual; students respect each other and their teachers. Their behaviour is exemplary."**

**"Leaders and managers have been successful in developing a culture of high aspirations and achievement throughout the college."**

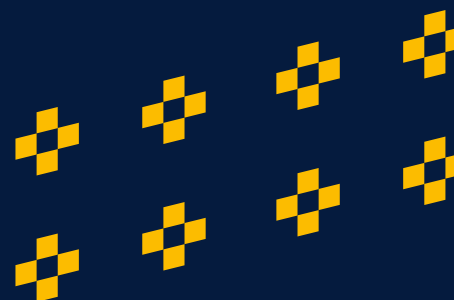
## Message from our Alumni Sophie Marren, who is currently working as an English Teacher at Parkwood Academy.

**Making decisions is a part of growing up and maturing but some decisions in life are more difficult than others. When I think back to the decision making process of further education, it is always a fond memory of mine.**

My mum encouraged me to visit as many different sixthforms and colleges as I could in order to get the 'feel' of each place. My mum said to me, 'you'll know which place is right for you when you get there'. On that Thursday afternoon I visited Longley Park. From the moment I walked through those doors and stepped foot into the building, I knew that this place was where I wanted to spend my next two years. I immediately felt at ease and couldn't wait to be part of Longley Park. What I liked the most about Longley was that you're fully supported in making the right choices about subjects to take. I took on 3 A Levels: English, Psychology and History and these choices were definitely the right choices for me based upon my GCSEs and my interests. Longley Park do the best by every student in their care.

From the building, to the facilities, to the teachers, to the canteen, to the lessons, everything was perfect. When walking into the building you're greeted by the reception staff who know you by name then the canteen staff that remember your breakfast order then you go to your lesson or the resource centre and you just feel so settled and part of a community – it is an incredible feeling to know that everyone is on your side and cares. Longley Park provided full support to me from the minute I accepted my place to beyond my A Level results day. I met so many friends at Longley Park (friends I am still close to today); I got to participate in many activities – even getting to be on TV – and I left Longley Park with some excellent results. I couldn't have asked for more! If I hadn't have attended Longley Park, I would be as successful as I am today. Longley Park staff go above and beyond. They even agreed to allow me to do some work experience when I had applied to do my teacher training. That's the thing about Longley Park, you're not just a number or a grade to them, you're a human being that they truly care for and they want you to be the best version of yourself.

**When I think back to Longley Park, there is nothing but positive memories. I wish more of my friends could have had the same incredible experience at their colleges as I had at Longley. I wholeheartedly think that making the decision to go to Longley Park Sixth Form College was the best decision I have ever made; I had the best educational and social experience I every could have hoped for. Longley Park isn't just a sixthform college, it is a place where you can flourish, grow and be successful.**



# Academic Tutorial Programme

**To make Project You a success, you will work closely with an Academic Tutor who will guide and support you in your studies.**

## Support

Your Tutor will assist you throughout your journey, including barriers to your learning like stress, attendance and managing your workload. Regular one-to-one support will help you track your grades and develop a learning plan to maximise your potential.

## Engagement

The Student Achievement team oversees our engagement programme. We invite speakers, organise conferences, facilitate Q&A panels and run national and international trips, all to help you develop wider skills and cultural awareness. Recent trips include New York, Berlin and London.

## Progression

Our expectation is that all students progress to meaningful destinations. Whether this is university, employment or apprenticeship, students receive bespoke guidance in application processes such as UCAS. This includes writing personal statements and making course choices. We also work closely with Sheffield Futures to provide students with further advice.

## Academic Tutorial Sessions

- We have a strong focus on equality and diversity. We encourage debate and discussion on topics such as LGBT, health and wellbeing and British values.
- We have excellent links with universities, with regular guest talks, interactive sessions and open day opportunities.
- We develop your confidence in writing CVs, applying for jobs, preparing for interviews and boosting self-esteem.
- We have individual one-to-one meetings, focusing on specific needs to help you achieve your goals.



## Project You

Wider Opportunities

**Project You is about more than just academic success. It's about exploring new opportunities and developing key skills which help you stand out from the crowd.**

## High Achievers

Your opportunity to take part in university and national mentoring schemes and build a pathway to Russell Group and Oxbridge Universities.

## Duke of Edinburgh

Duke of Edinburgh is a great way to meet new people, gain voluntary experience, develop key life skills and strengthen your progression application through the award.

## Volunteering

We will help you to find relevant opportunities to gain experience and skills, enabling you to access careers. This might be in areas including sport, health and science. You will find out more about the different opportunities available at our volunteering fair.

## Student Council

Our Student Council represent the student body to influence positive changes at Longley Park. Recent successful proposals are gender neutral toilets and the multi-faith contemplation space.

## Debating Society

A great way to develop your confidence and skills through research and verbal reasoning, as well as public speaking – crucial to success.

## Community Liaison

It's important to understand the make up of the Longley Park community and the challenges we all face in the modern world.

## Student and Brand Ambassadors

This is open to all students and is a fantastic way to earn money alongside your studies. Ambassadors have a very important role at Longley Park and are positive role models to current and prospective students, in the local community and online.



# UK Career Ready Programme

**Longley Park is the only provider in the area to be a part of the prestigious UK Career Ready programme. This is an exciting scheme designed to give students studying a wide range of advanced level courses extra experience with local employers and businesses in order to help with their future careers.**

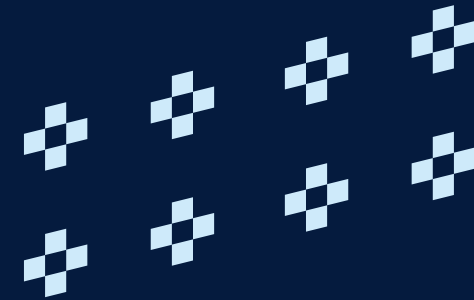
Our graduates from the scheme have secured places at some of the UK's top universities, as well as careers with prestigious companies.

## **We offer programmes in the following areas:**

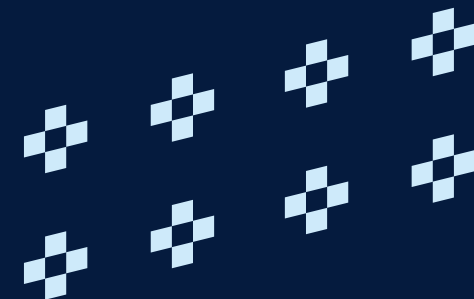
- Business and Finance
- Creative and Digital Arts and Media
- STEM subjects (Science, Technology, Engineering and Mathematics)

If you are following any advanced level courses related to these areas, you will be able to apply for the programme. It is a competitive application process and as the programme is supported by a wide network of national and local businesses and entrepreneurs then you will need to demonstrate a real drive to succeed.

You will get more information about Career Ready when you arrive at Longley Park through your advanced level courses.



**We're not here to hold your hand. But we'll support you every step of the way.**





# Learning Support

**Here at Longley Park Sixth Form, we have an experienced and dedicated learning support team that treats every student as an individual. Meaning you get the support you need.**

**We can support students who have a range of needs, including:**

- Dyslexia
- Dyspraxia
- Autism or Asperger Syndrome
- ADHD
- Learning difficulties or disabilities
- Sensory impairments
- Physical difficulties
- Medical conditions

Our team will work with you to find your individual strengths and discuss any parts of your sixth form experience that you might find difficult. We will provide you with the suitable support to help you excel and meet the demands of your chosen course. This might include support in the classroom or getting around the building, individual study sessions or access to drop-in sessions.

If you have an EHC Plan, you will be supported through transition to us. Support will be planned with you, your parents/carer and any other relevant professionals. You will be supported to achieve the agreed outcomes on your EHC Plan alongside your academic progress.

We have more details of the specific support you are entitled to in our Local Offer. If you would like to find out more about the support we can offer, please contact the Learning

**Support Team on:**

**Tel:** 0114 262 5762 or 0114 262 5781

**Email:** LKellar@BrigantiaTrust.net

**"I've had lots of help from the support team, thanks to them my spelling and grammar has improved and I've been able to grow massively as a person"**



# Financial Support

**We'll do all we can to support you throughout your time here. This may involve working to identify any barriers to learning and providing you with the best support to help you overcome them.**

**Making sure you know about the financial support available to you will help get you off on the right foot.**

**Free for all students:**

- Your courses
- Textbooks
- Specialist equipment
- If you're aged 16-18, in full-time education and living in South Yorkshire, you're entitled to a student travel pass

**You could be entitled to financial support:**

**Longley Park Guaranteed Bursary**

If you're aged 16-18 and currently receiving Income Support/Universal Credit, Personal Independence Payment and Employment Support Allowance, are in care or are leaving care, you could be eligible for a bursary of up to £1,200 per year.

**Longley Park Bursary Fund**

If your household income is less than £16,190, you could be eligible for financial support from the Bursary Fund to help with:

- Travel
- Printing costs
- Trips
- Emergency situations

**Further Education Free Meals**

You may be entitled to free meals, you can apply via the Bursary Fund application form.

**Care to Learn**

If you're a young parent (aged under 20) you can apply for Care to Learn for help with your childcare costs.

You will receive a guide to the financial support available at Longley Park in your Student Finance Pack that will be sent out to you before you enrol.

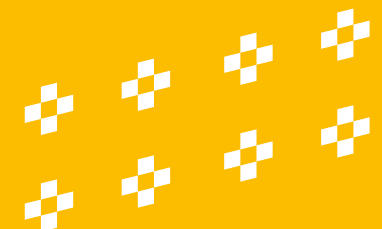
**Any queries?**

You'll find the Student Finance Office in the Plaza.

**Tel:** 0114 262 5793 or 0114 262 5794

**Email:**

vbark@brigantiaTrust.net







## Safeguarding

### Be Safe and Feel Safe.

Your safety and wellbeing is a priority at all times at Longley Park. If you have any personal concerns or worries about a friend, talk to a member of staff. Whatever your concerns and needs, we want to hear them and will work with you to address them. Support includes wellbeing, counselling and referral to external agencies.

### The Safeguarding Leads at Longley Park are:

#### Donald McLean

Vice Principal (Student Engagement)

#### Tania Hussey-Yeo

Assistant Principal  
(Student Achievement)

#### Vicky Bark

Student Support Manager

Their offices are designated safeguarding points where you can go to discuss concerns you may have. Please remember any member of staff is there to help you if you have any worries.

# Extended Project Qualification (EPQ)

## YOUR 4th A LEVEL

**The EPQ is a Level Three, research driven course that high achieving students take alongside their main areas of study. It is a one year course that is usually taken spanning the first and second year of study.**

Top universities are really keen to see students achieve the qualification, which is awarded at A Level standard, between grades A\* to E, as it demonstrates commitment and a development of crucial academic skills.

### Skills include:

- Research technique
- Critical thinking and argument technique
- Time management
- Self-reflection
- Referencing
- Essay structure and source engagement
- Independent study and working with a supervisor
- Academic presentation

Students must complete 120 hours of work over the duration of the qualification and can choose any topic they are passionate about. Many opt to write a 5,000 word essay, however some choose to create an artefact and write a shorter essay alongside it.

Each year, two thirds of students who complete the EPQ achieved a high grade, (A\*, A or B). In four of the last six years, our students have achieved 100% – the highest mark in the country. So if you want to stand out from the crowd, and you are passionate about academia, this is the course for you!

## Stand out from the crowd!

# Independent Learning Centre

**At Longley Park we have our own purpose built Independent Learning Centre that provides the perfect environment for you to study. Our space has been created to emulate a university style learning environment and has study areas designed to accommodate all learning needs.**

The ILC staff work closely with teaching staff and academic tutors to provide the research tools and skills necessary to support teaching and independent study.

## **Our services include:**

- A wide range of hard copy resources, including books (fiction and non-fiction), journals, magazines and newspapers
- Access to online resources, such as e-books, online journals and newspapers and searchable databases
- A large number of computers available for you to use in your free time
- Group and individual study spaces
- A silent study area
- Bookable seminar rooms for group study
- Printing, photocopying and scanning services
- Dedicated staff available to give help and advice

The ILC is open 5 days a week.

## **Contact details**

**Email - [ilcteam@longleypark.ac.uk](mailto:ilcteam@longleypark.ac.uk)**

**Telephone - 01142625721**

## Our Wellbeing Space

**At Longley Park, we have a dedicated Wellbeing Space where you can access wellbeing support from our specialist team whenever you need it. In this space, you can access the drop-in service, 1-1 support sessions and if needed, be referred for further support with a counsellor or therapist.**

### **You might use this space if...**

- You would like support with the emotional side of adjusting to sixth form life
- There are issues which are affecting your studies

- Things are happening in your life outside of Longley Park and you would like to learn some strategies to deal with them
- You are dealing with a specific mental health issue such as anxiety or depression
- You're having a bad day and would just like someone to talk to. We all need someone to talk to sometimes.

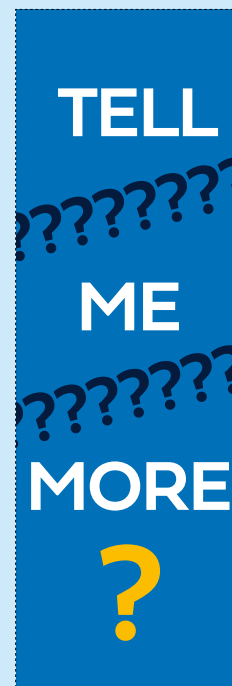
It is normal and natural to experience things in our lives which mean we need some extra support.

Feeling healthy and happy at Longley Park is integral to your success in your studies.

The Wellbeing Space is in room G05 towards the bottom of the Art Corridor on the ground floor.

# Find the right course for you

QUALIFICATION	INFO	ASSESSMENT	ENTRY REQUIREMENTS	COURSE CHOICES
A Levels	Choose 3 or mix with BTEC Level 3	Exams	5 GCSE's grade 4 or above including English and Maths	Architecture / Interior and Product Design / Art and Design / Biology / Business Studies / Chemistry / Economics / English Language / English Literature / Geography / Government and Politics / History / Law / Mathematics / Further Mathematics / Media Studies / Photography / Physics / Psychology / Religious Studies / Sociology
BTEC Level 3 Extended Certificate, Diploma, certificates	Choose 3 or mix with A Levels	Exams	5 GCSE's grade 4 or above including English and Maths	Applied Human Biology / Applied Psychology / Applied Science (worth 2 A Levels) / Business (worth 2 A Levels) / Children and Young People (worth 2 A levels) / Care and Education / Computing / Core Maths / Criminology / Engineering / Financial Studies / Health and Social Care / Information Technology / IT & Business (worth 1 or 2 A levels) / Law / Sports Development / Coaching and Fitness
Level 3 Extended Diploma, Diploma	Choose 1 course. Equivalent to 3 A Levels	Coursework with external testing	4 GCSE's grade 4 or above including English and Maths	Applied Science, Art and Design (UAL) / Business / Childcare and Educations (CACHE) / Creative Media Production & Technology / Games Design / Health and Social Care / Information Technology
Level 2	Choose 1 course	Coursework with external testing	2 GCSE's grade 3	Business Studies / Business Workskills / Health and Social Care / Information and Creative Technology / Sport / Working in Early Years and Primary School Setting
Level 1 GCSE Math, Science, English, ESOL, Functional Skills	Choose 1 course You will need to take Maths or English if you do not already have a GCSE Grade 4	Coursework	1 GCSE grade 2 or 1	Art, Design and Media / Visual Arts and Creative Media / Health & Social Care / IT and Business (Vocational Pathway) / Vocational Studies







# How to apply

**If your school is using Sheffield Progress you can use this to apply to Longley Park. Your school will work with you to take you through this process.**

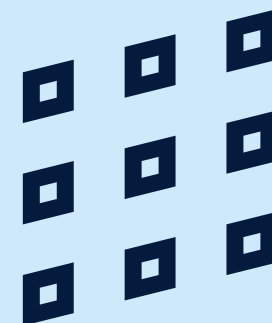
**Alternatively, you can apply directly through the Longley Park website [www.longleypark.ac.uk](http://www.longleypark.ac.uk)**

## **Advisory interviews and getting started**

Once we have your application we'll arrange an advisory interview at Longley Park. This is so we can discuss what courses would be right for you.

We will look at your career interests, and plans for further study alongside how you have been doing at school. If you have questions about courses or about us, we'll answer them.

At the end of the process, we record the courses that you're interested in. Parents and guardians are very welcome at the interviews. In the summer, we'll send you and your parents more information about starting at Longley Park. This will include details of your enrolment appointment.



# Contents

## Business 29

A Level – Business Studies **30**  
A Level – Economics **31**  
Level 3 Diploma – Financial Studies **32**  
BTEC Level 3 Extended Certificate – Business **33**  
BTEC Level 3 Extended Diploma – Business **34**  
BTEC Level 2 Certificate – Business Studies **35**  
BTEC Level 2 Certificate – Business Workskills **36**  
Level 1 Diploma – IT and Business **37**

## Information Technology & Computing 39

BTEC Level 3 Extended Certificate – Computing **40**  
BTEC Level 3 Extended Certificate – Information Technology **41**  
BTEC Level 3 Extended Diploma – Technology **42**  
BTEC Level 2 Certificate – Information & Creative Technology **43**

## Languages 45

A Level – French **46**  
A Level – Spanish **47**

## Law 49

A Level – Law **50**  
BTEC Level 3 Extended Certificate – Law **52**

## Childcare & Education 55

Cache Level 3 – Childcare & Education **56**  
Level 3 Diploma – Young People: Care & Education **57**  
Cache Level 2 – Working in Early Years & Primary School Settings **58**

## Creative Arts & Media 61

A Level – Art & Design – Fine Art **62**  
A Level – Architecture, Interior & Product Design – 3D Design **63**  
A Level – Media Studies **64**  
A Level – Photography **65**  
UAL Level 3 Extended Diploma – Art & Design **66**  
UAL Level 3 Extended Diploma – Creative Media Production & Technology **67**  
UAL Level 3 Extended Diploma – Games Design **68**  
UAL Level 2 Diploma – Art & Design – Visual Arts & Creative Media **69**  
UAL Level 1 Diploma – Art & Design – Visual Arts & Creative Media **70**  
BTEC Level 3 Extended Diploma – Performing Arts (Drama) **71**

## English 73

A Level – English Literature **74**  
A Level – English Language **75**

## Humanities 77

A Level – Geography **78**  
A Level – Government & Politics **79**  
A Level – History **80**  
A Level – Psychology **81**  
A Level – Religious Studies **82**  
A Level – Sociology **83**  
BTEC Level 3 Extended Certificate – Applied Psychology **84**  
WJEC Level 3 Extended Diploma – Criminology **85**

## Health & Social Care 87

BTEC Level 3 Extended Certificate – Health & Social Care **88**  
BTEC Level 3 National Extended Diploma – Health & Social Care **89**  
BTEC Level 3 Diploma – Health & Social Care **90**  
BTEC Level 2 Certificate – Health & Social Care **91**  
BTEC Level 1 Introductory Diploma – Health & Social Care **92**  
BTEC Level 1 Introductory Diploma – Vocational Studies **93**

## Maths 95

A Level – Mathematics **96**  
A Level – Mathematics **97**  
Level 3 Certificate – Core Maths **98**

## Science 101

A Level – Biology **102**  
A Level – Chemistry **103**  
A Level – Physics **104**  
BTEC Level 3 Extended Certificate – Applied Human Biology **105**  
BTEC Level 3 Diploma – Applied Science **106**  
BTEC Level 3 Extended Diploma – Applied Science **107**  
BTEC Level 2 Extended Certificate – Applied Science **108**  
BTEC Level 3 Extended Certificate – Engineering **109**

## Sport 111

BTEC Level 3 National Extended Diploma – Sports development, Coaching & Fitness **112**  
BTEC Level 3 National Extended Certificate – Sports development, Coaching & Fitness **113**  
BTEC Level 2 Certificate – Sport **114**

## GCSEs, Functional Skills & ESOL 117

GCSE & Part Time ESOL, Functional Skills – English **118**  
GCSE & Functional Skills – Maths **119**  
GCSE – Biology **120**  
English for Speakers of Other Languages – Full Time ESOL **121**

Full course information is available on our website at [longleypark.ac.uk](http://longleypark.ac.uk)  
Courses are subject to approval by awarding bodies and therefore are subject to change. Our course offer may vary depending on number of applications received.  
If you require this prospectus in a different format, for example in large text or braille, please contact us on **0114 262 5757**.



# Business

A Business qualification is highly desired by many employers as these qualifications will give you the skills and knowledge to be successful either to progress on to industry or to university. You have the opportunity to gain an interesting insight into the ever changing world of businesses and an understanding of how you can be a part of the growth of this field. As a Business student, you will also get the fantastic opportunity to be part of the Career Ready programme. Turn to page 10 for more information.

## Careers and progression

- Higher Education
- Management training courses
- Administration Assistant
- Business Project Manager
- Human Resources Manager
- Customer Services Manager
- Legal Executive
- Hotel Receptionist
- Banking
- Management
- Sales Manager
- Accountant
- Business
- Retail

“Through the career talks, university visits and opportunities for voluntary work I realised the path I would like to go down”



# Business Studies

## A LEVEL - 2 YEARS

Entry Requirements: 5 GCSEs at grade 4-9 (A\*-C)  
including English + Maths

### What will I study?

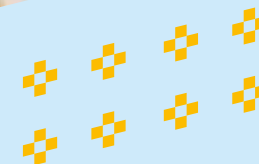
You will learn about what businesses do and how they do it, what factors are likely to make businesses successful, and practical information about the legal, financial and marketing requirements of the business world. In the first year you will look at how to plan and finance a business and techniques for successful management including Human Resources. In the second year you will study strategies for business success, the global environment in which businesses operate and how they manage change.

### How will I be assessed?

Written examinations.

### What can I do next?

A Level Business Studies can provide a stepping stone into another field, perhaps onto a totally unrelated course. If you want to specialise, you could choose further study in business studies, marketing or accounting. The skills and knowledge developed by the course are highly valued by employers, and would be useful for progression to management training courses in banking, other financial institutions and retailing.



# Economics

## A LEVEL - 2 YEARS

Entry Requirements: 5 GCSEs at grade 4-9 (A\*-C)  
including English + Maths

### What will I study?

Economics is the study of the way society organises, produces, distributes, regulates and consumes resources. It covers areas such as employment, inflation, interest rates, currency exchange rates, and the way in which the government and other regulatory bodies manage and run the economy. In the first year you will study how competitive markets work and why they fail and will investigate how the economy is managed. In the second year you will study Business Economics and Economic Efficiency and the Global Economy.

### How will I be assessed?

Written examinations.

### What can I do next?

A Level Economics provides an excellent background for further study and careers in a wide range of areas. If you want to specialise there is a wide choice of Higher Education courses in economics and business related subjects.





# Business

## BTEC LEVEL 3 EXTENDED CERTIFICATE - 2 YEARS

Entry Requirements: 4 GCSEs at grade 4-9 (A\*-C)  
including English + Maths.

### What will I study?

You will study different types of businesses and how they operate. This includes developing a marketing campaign, personal and business finance, recruitment and selection process and investigating customer service.

### How will I be assessed?

Examinations + assignments

### What can I do next?

A variety of options are available to you following study of business. The skills and knowledge developed by the course would be useful for progression to management training courses in banking, other financial institutions and retailing. If you want to go on to higher education there are degree courses available in business studies, marketing and accounting.



# Financial Studies

## LEVEL 3 DIPLOMA 2 YEARS

Entry Requirements: 4 GCSEs at grade 4-9 (A\*-C)  
including English + Maths

### What will I study?

This London Institute of Banking and Finance qualification has been developed with the input of leading firms from the financial sector to ensure it gives you the essential and most up-to-date knowledge. You will look at a range of topics such as short term to long term financial needs and investigating the personal financial life cycle recommending suitable financial products to meet individual needs. You will also look at the impact of debt on individuals and explore the ethical and sustainable nature of the financial services industry.

### How will I be assessed?

Examinations.

### What can I do next?

You can advance onto university courses in accounting, banking, accounting, finance, investment and other related subjects. Alternatively, the transferable skills gained throughout the course can make you very employable in a number of different business areas.

**Please note:** Equivalent to 1 A Level, must choose 2 other courses of study.



# Business

## **BTEC LEVEL 3 EXTENDED DIPLOMA - 2 YEARS**

Entry Requirements: 4 GCSEs at grade 4-9 (A\*-C)  
including English + Maths

### **What will I study?**

You will study different types of businesses and how they operate. This will include developing a marketing campaign and digital marketing, finance, principles of management and decision making, managing an event, customer service, human resources and international business.

### **How will I be assessed?**

Examinations + assignments.

### **What can I do next?**

A variety of options are available to you following study of business. The skills and knowledge developed by the course would be useful for progression to management training courses in banking, other financial institutions and retailing. If you want to go on to higher education there are degree courses available in business studies, marketing and accounting.



# Business Studies

## **BTEC LEVEL 2 CERTIFICATE - 1 YEAR**

Entry Requirements: At least 2 Grade 3's (D) at GCSE

### **What will I study?**

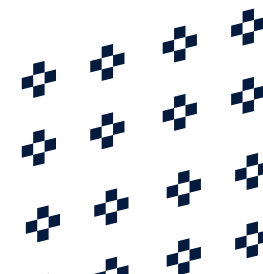
You will gain a good knowledge of business in general with a particular focus on key areas such as selling skills and entrepreneurial skills. The course covers different types of businesses, how to provide excellent customer service and what is involved in running a business. Projects and assignments are based on realistic workplace situations so you get a real insight into the kind of jobs and career routes that are available. In addition to the main programme, you will complete a BTEC Workskills qualification.

### **How will I be assessed?**

Examinations + assignments.

### **What can I do next?**

Students from this course have gone on to study BTEC qualifications in Business and Business Finance at Level 3 or a combination of A Levels and BTEC Subsidiary Diplomas. Many of them have then gone on to university to develop the skills to secure a job in industry or start up their own business.



# Business Workskills

## BTEC LEVEL 2 CERTIFICATE - 1 YEAR

Entry Requirements: At least 2 Grade 3's (D) at GCSE

### What will I study?

You will gain a good knowledge of general skills needed to work within a business with a particular focus on key areas such as working in an office environment and providing administration support to client and customers. The course covers different types of business roles and skills needed within an everyday office. You will develop employability skills and knowledge to allow you to work within different types of business. You will be expected to develop your skills within a one day placement in an office environment.

### How will I be assessed?

Assignments.

### What can I do next?

Students from this course could go on to study BTEC qualifications in Business. Many of them have then gone on to secure a job in industry or start up their own business or work within a business degree courses available in business studies, marketing and accounting.



# IT and Business (Vocational Pathway)

## LEVEL 1 DIPLOMA - 1 YEAR

Entry Requirements: 2 GCSEs at grade 2 (E) and 1 GCSE at grade 1 (F)  
Students without GCSEs will be asked to complete a diagnostic assessment

### What will I study?

You will find out about opportunities for work in the IT and Business industry and develop transferable skills, attributes and behaviours needed for learners to progress to further study and ultimately to employment. This course is all about improving your confidence and personal skills. It is a personalised learning programme which means that it is tailored to what you need in order to progress on to further training, employment or study.

### How will I be assessed?

Assignments, practical observations, logs, diaries + verbal presentations.

### What can I do next?

Successful students may progress to a Level 2 course in a related subject.





# Information Technology & Computing

Information Technology and the Computing qualifications are highly sought after by many employers. These qualifications will not only give you the practical skills and knowledge needed but will allow you to gain the analytical skills to be successful, either to progress into industry or on to university. You have the chance to design and create working products that can affect our everyday life. We have a variety of BTEC qualifications at all levels to suit your desired progression route.

## Careers and Destinations

- Higher Education
- Training or Apprenticeship
- e-Business
- Software Engineer
- Information Security
- Network Management and Design
- IT Practitioner
- Digital Marketing Officer
- Forensic Computer Analyst
- Information Scientist



# Information Technology

## **BTEC LEVEL 3 EXTENDED CERTIFICATE - 2 YEARS**

Entry Requirements: 4 GCSEs at grade 4-9 (A\*-C)  
including English + Maths

### **What will I study?**

You will improve your knowledge and practical skills in IT, including web design and e-commerce, data communications, expert systems and computing, social media for businesses, information systems (Databases). You'll find out about how computer systems work and learn how to use different applications. Assignments are based on workplace situations so you will get a real insight into the careers available in IT and what it is like to work in industry.

### **How will I be assessed?**

Examinations + assignments.

### **What can I do next?**

Students from this course have gone on to university to study computing, e-Business, IT for practitioners and software engineering. The course develops valuable skills for other higher level courses and employment.

# Computing

## **BTEC LEVEL 3 EXTENDED CERTIFICATE - 2 YEARS**

Entry Requirements: 4 GCSEs at grade 4-9 (A\*-C)  
including English + Maths

### **What will I study?**

Alongside core units in communication and employability and computer systems, this course is designed specifically for those students interested in computing rather than ICT in general. Additional units of study on this pathway will include a range from databases, programming, networking and mathematical concepts.

### **How will I be assessed?**

Examinations + assignments.

### **What can I do next?**

Students from this course will go on to university to study computing, e-Business, IT for practitioners and software engineering. The course develops valuable skills for other higher level courses and employment.

# Information Technology

## **BTEC LEVEL 3 EXTENDED DIPLOMA - 2 YEARS**

Entry Requirements: 4 GCSEs at grade 4-9 (A\*-C) including English + Maths

### **What will I study?**

You will develop knowledge and practical skills in the field of information and communications technology, including web design and e-commerce, data communications, expert systems and computing, social media for businesses, information systems (Databases), programming, cyber security and incident management, IT services delivery, IT project management, computer game development digital 2D and 3D graphics and digital animation and effects. You will complete practical projects and assignments based on realistic workplace situations and find out about career routes in IT.

### **How will I be assessed?**

Examinations + assignments.

### **What can I do next?**

Students from this course have gone on to university to study information technology management, business information technology, computer and information security, software engineering and network management and design. Some go directly into employment with training.

# Information & Creative Technology

## **BTEC LEVEL 2 CERTIFICATE - 1 YEAR**

Entry Requirements: At least 2 Grade 3's (D) at GCSE

### **What will I study?**

You will learn about computer and information systems, web design, working in the IT industry, database and communications technology. You will learn by completing projects and assignments that are based on realistic workplace situations and find out about jobs in the IT sector. Students will have access to the latest in IT resources, both for lessons and for private study. In addition to the main programme, you will complete a BTEC Work skills qualification.

### **How will I be assessed?**

Examinations + assignments.

### **What can I do next?**

Students from this course have gone on to study the Level 3 Extended Diploma in IT or a combination of A Levels and Level 3 Subsidiary Diplomas. Others have chosen to follow an Apprenticeship route.



# Languages

Studying languages really does expand your horizons. You will find out about the culture and lifestyle of other countries where the language is spoken and being fluent in a language is a huge advantage if you want to travel. In our increasingly global society, language skills are also very much in demand when it comes to careers. Employers in a wide range of sectors are keen to recruit people who can communicate confidently with partners and clients overseas.

As well as learning about other countries, studying a foreign language will improve your communication in general as you find out about how languages work. You will also get a better understanding of English vocabulary and grammar!

## Careers and Destinations

- Study further abroad in your chosen language country
- Marketing Manager
- Interpreter
- Lawyer
- Teacher
- Work within the Travel and Tourism Industry





# French

## A LEVEL - 2 YEARS

Entry Requirements: 5 GCSEs at grade 4-9 (A\*-C) including English and Maths + French. Students who have not studied GCSE but have a high level of competence in French will be considered.

### What will I study?

You will develop the ability to communicate confidently in written and spoken French with a high level of grammatical accuracy. The topics studied will build on your GCSE and move you towards speaking French fluently and cover:

- Education and employment in France and the French speaking world
- Family life in French culture
- Literature and film of France
- Media
- Equality and Diversity in the French speaking world

You will work in a supportive learning environment where small group tasks build your confidence and teaching staff provide all the help and encouragement you need to excel. You will have dedicated time each week to practice your conversations skills with a fluent speaker.

### How will I be assessed?

100% examination: Oral assessment (30%), listening, reading and translation (50%), writing (20%)

### What can I do next?

The French language is spoken across all five continents, so studying French is an excellent way of enhancing your international career prospects. You will develop linguistic and reasoning skills that are important for any academic route. In addition to studying French at university, A Level French is also an asset for degrees in Law, Teaching, Journalism and Communications.

# Spanish

## A LEVEL - 2 YEARS

Entry Requirements: 5 GCSEs at grade 4-9 (A\*-C) including English and Maths + Spanish. Students who have not studied GCSE but have a high level of competence in Spanish will be considered.

### What will I study?

You will develop the ability to communicate confidently in written and spoken Spanish with a high level of grammatical accuracy. The topics studied will build on your GCSE and move you towards speaking Spanish fluently and cover:

- Education and employment in Spain and the Spanish speaking world
- Family life in Spanish culture
- Literature and film of Spain
- Media
- Equality and Diversity in the Spanish speaking world

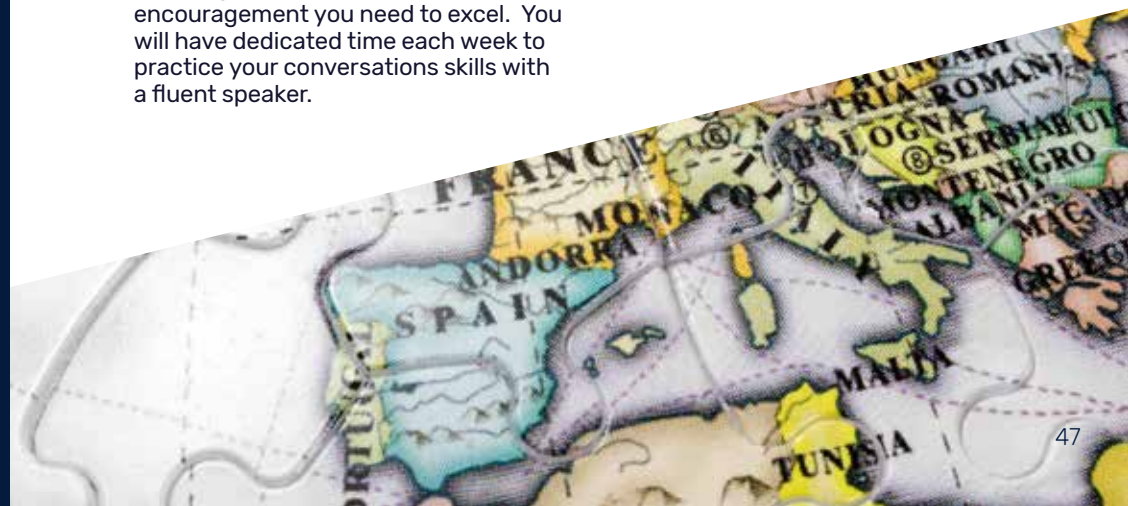
You will work in a supportive learning environment where small group tasks build your confidence and teaching staff provide all the help and encouragement you need to excel. You will have dedicated time each week to practice your conversations skills with a fluent speaker.

### How will I be assessed?

100% examination: Oral assessment (30%), listening, reading and translation (50%), writing (20%)

### What can I do next?

There are over 400 million speakers across the world, so studying Spanish language is an excellent way of enhancing your international career prospects. You will also develop linguistic and reasoning skills that are important for any academic route. In addition to studying Languages at university, A Level Spanish is also an asset for degrees in Law, Marketing, PR, Teaching, Journalism and Communications.





# Law

A Law qualification is highly desired by many employers as this qualification will give you the skills and knowledge to be successful, either to progress in to employment or onto university. You have the opportunity to gain an interesting insight into the ever changing world of Law by studying a variety of subjects related to the current legal system. The route we offer is a BTEC pathway.

## Careers and Destinations

- Higher Education
- Solicitor
- Barrister
- Journalism
- Public Relations
- Teaching
- Management
- Mediator
- Chartered Legal Executive
- Data Scientist
- Police

# Law

## A LEVEL - 2 YEARS

Entry Requirements: 5 GCSE's at grade 4-9 (A\*-C)  
Including English + Maths

### What will I study?

- **The nature of law and the English legal system.** This topic explores the fundamental values of the English legal system, both systematic and theoretical. It will give you an overview of the functioning of the court structures and the legal personnel that work within it. We will also look at law making both within Parliament and how law is made in real cases. This topic is a thread that runs through all the topics within A-Level Law, and covers how the law is intertwined with all our lives and is invaluable knowledge to have at your fingertips, if you are an aspiring lawyer or not!
- **Criminal law** . This is a topic that has an entire section on Netflix dedicated to it! A-Level law will provide you with an in-depth understanding of how a person is found criminally liable for their actions and will teach you how this is proven in court. It specifically focuses on fatal and non-fatal offences, such as murder, manslaughter and grievous bodily harm, as well as property offences such as theft and robbery. We will also assess the many defences that may be raised by a defendant such as insanity and self-defence.

- **Tort.** Have you had a slip, trip or fall that wasn't your fault!? We've all seen these adverts on the TV, but this topic will give you an understanding of how it can be proven, legally, that someone is liable for losses caused by negligent acts and what the repercussions of breaching a duty of care can be. It has been one of the fastest growing areas of the law, not to mention very lucrative for practicing lawyers.

#### Optional Topic

- **Law of contract** .Every single time you purchase anything you enter into a contract. We all enter into contracts but do you know how they work, what makes a contract legal and what you can do if someone breaches their contract? We will look at what makes a contract legally binding, what can and cannot be put into a contract and what rights you have when a contract is breached.

OR

- **Human rights.** Human rights is a very well known term but legally speaking, it is one lost on many. This topic allows us to delve deeper into what we actually mean by human rights both within the UK and internationally. Some of the specific human rights we will look at include the right to life, right to liberty, freedom of expression and right to private and family life. This covers many very debatable topics such as abortion, life sentences, rights of prisoners and police powers, what is free speech and much more...

### How will I be assessed?

Examination. There will be 3 papers, all worth 33% of the A-Level;

Paper 1: The nature of law and the English legal system & Criminal law.

Paper 2: The nature of law and the English legal system & Tort

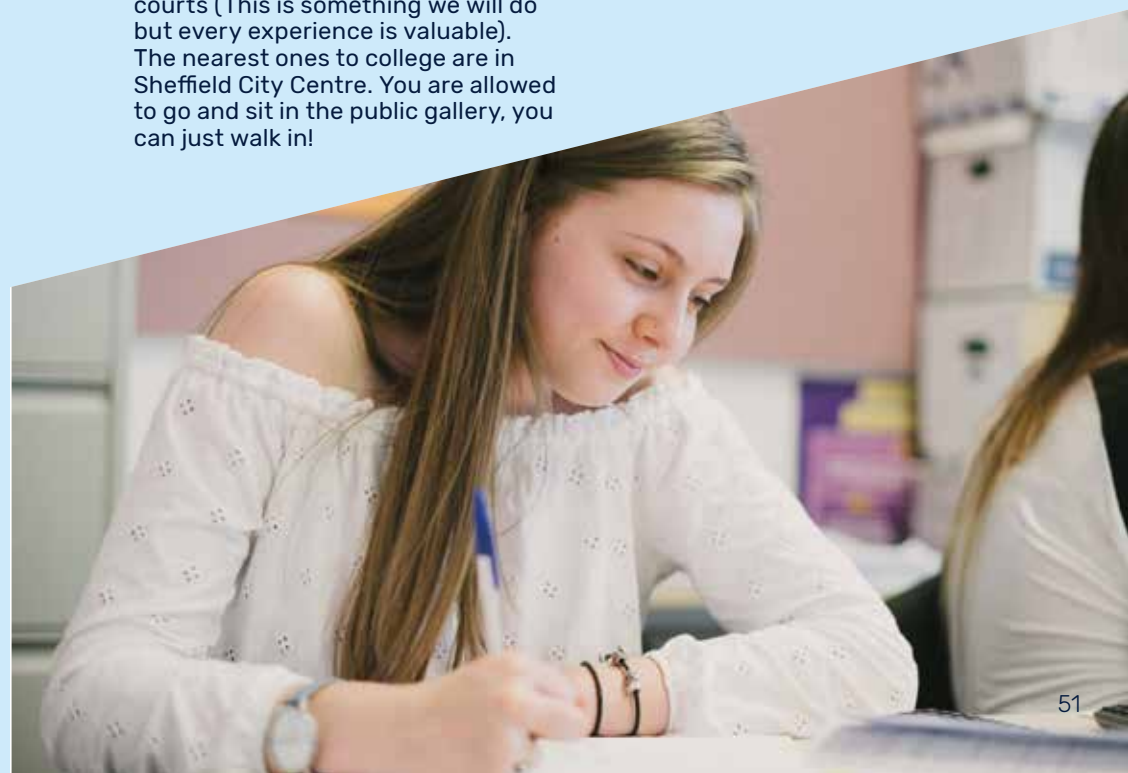
Paper 3: The nature of law and the English legal system & Law of contract OR Human rights

### What can I do next?

If you are interested in law your next steps should be to look at how you can become more familiar with the law around you. Take a trip to your local magistrates and crown courts (This is something we will do but every experience is valuable). The nearest ones to college are in Sheffield City Centre. You are allowed to go and sit in the public gallery, you can just walk in!

Now, reading is very good but don't just stick to books. Lots of legal professionals and legal academics use Twitter to discuss the changes and topic stories surrounding law and to discuss the legal profession. It is a great way to get an insight into a possible career in law. A recommendation to get you started on Twitter is The Secret Barrister @BarristerSecret and CrimeLine @CrimeLineLaw.

Also, documentaries are useful but try and focus on UK and real-life programmes. A good place to start is 24 Hours in Police Custody on Channel 4.





# Law

## BTEC LEVEL 3 EXTENDED CERTIFICATE - 2 YEARS

Entry Requirements: 5 GCSEs at grade 4-9 (A\*-C)  
including English + Maths

### What will I study?

You will find out about the English legal system and how law influences our daily lives. Assignments are designed to give you a real sense of what it is like to work in the legal professions and visits to courts in session and discussions with guest speakers will be part of the course. The skills you will develop on the course, such as being able to see both sides of an argument, effective research skills and solving complex legal problems will be of value to you in other areas of life.

### How will I be assessed?

Examination + assignments.

### What can I do next?

You may go on to study Law at university with a view to becoming qualified as a Solicitor or Barrister. Law also provides a good basis for further study of any subject at a higher level, and is valued by employers in a range of areas such as journalism, public relations, teaching and a range of management and business areas.







# Childcare and Education

We have high expectations for all of our students and provide a stimulating learning environment that blends practical skills with theory. We will help you achieve the best grades and will work closely with you to ensure you fulfil your potential. You will have the opportunity to attend different placements in order to build your practical skills and apply the lesson based theory. All of our recent Year 2 leavers have left Longley Park either with a place at university or with the offer of paid employment from their placement providers. A positive outcome for all!

## Careers and Destinations

- Higher Education and further study
- Early Years Educators
- Practitioner in day nurseries and nursery schools
- Practitioner in reception classes in primary schools
- Pre-school worker and Nanny
- Teaching Assistant



# Children and Young People: Care and Education

## LEVEL 3 DIPLOMA - 2 YEARS

Entry Requirements: 4 GCSEs at grade 4-9 (A\*-C) preferably including English + Maths

## Childcare & Education

### CACHE LEVEL 3 - 2 YEARS

Entry Requirements: 4 GCSEs at grade 4-9 (A\*-C) including English + Maths

### What will I study?

Completing this qualification will show that you have been trained to the highest of standards, equipping you with the best early years training available. This qualification is now the must-have qualification and leads to a licence to practise and the status of being an Early Years Educator. It will enable you to work with children from birth to 5 years and gain knowledge of children aged 5 to 7 years. You will also have the opportunity to gain additional qualifications such as Paediatric First Aid. This is a work-related course so work placements are a key part of your study. You will take part in placements working with children of different ages in a variety of settings for two days per week as well as longer block placements during the year.

### How will I be assessed?

Assignments, portfolio tasks, case studies, external controlled assessments, reflective diaries + observations.

### What can I do next?

Upon achievement of this qualification learners will be able to enter the workforce as Early Years Educators or access Higher Education. Job roles in the statutory, voluntary or private sectors include, early year's practitioner in day nurseries, nursery schools, and in primary schools, pre-school worker, community nursery nurses and nanny.

### What will I study?

You will gain an in-depth understanding of the knowledge and skills required when working with children and young people in childcare settings, primary, secondary and special schools.

### You will study 2 different pathways:

#### Supporting Teaching and Learning

You will cover units focusing on supporting children and young people in schools as a teaching assistant including schools as organisations, assessment for learning and supporting maths and English. At the end of the qualification you will be qualified as a Level 3 Teaching Assistant

#### Applied General Certificate Early Year Childcare and Education

You will cover units and develop knowledge and understanding of child development, education and care including an understanding of childcare services, educational frameworks and roles and responsibilities within childcare settings.

### You can also choose to study 2 alternative pathways from this qualification:

1. Supporting Teaching and learning only - this will lead to employment as a Teaching Assistant
- or
2. Applied General Certificate Early Years Childcare and Education alongside two other single A Levels or BTEC equivalents

### How will I be assessed?

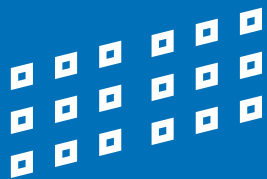
Observation, portfolio, written assignments + tasks and 200 hours of placement across school settings.

### What can I do next?

The full Children and Young People: Care and Education programme is equivalent to 2 A Levels and will lead to a Foundation Degree or employment:

- The Supporting Teaching and Learning Diploma is equivalent to 1 A level and would support progression to employment
- The Applied General Certificate in Early Years Childcare and Education is equivalent to 1 A level and would ideally be studied alongside other Level 3 qualifications leading to Higher Education or employment





# Working in Early Years and Primary School Settings

**CACHE LEVEL 2 - 1 YEAR**

Entry Requirements: At least 2 Grade 3's (D) at GCSE

## What will I study?

This qualification has been designed to support learners as they develop their knowledge, understanding and skills when caring for and supporting the learning and development of children aged 0 to 11 years 11 months. You will learn about children at different stages in their growth and development, how to care for and educate them and how to work with parents, carers and other professionals. This includes communication, positive behaviour, safeguarding and welfare, health and safety and creating positive environments for children and young people. This is a work-related course so work placements are a key part of your study. You will take part in placements working with children of different ages in a variety of settings.

## How will I be assessed?

Assessment will be through assignments, external short answer examination and you will also be assessed on your work placement.

## What can I do next?

The Certificate trains you to work in a job as an assistant in settings such as nursery assistant, crèche worker, childminder assistant. Students from this course have also gone on to study the CACHE Level 3 Diploma in Childcare & Education / Early Years Educator, Supporting Teaching and Learning, Children and Young people's Workforce and Health & Social Care.







# Creative Arts & Media

We are always amazed by the high standard of creative work our students produce. Our ethos is to help you become more independent and confident when expressing your creativity. There are some amazing opportunities for you to get involved in. Previous years have seen our students exhibit their work in London, taking part in live projects to enhance the local environment and produce professional video work for clients. We'll treat you as an adult and expect you to behave as professionals working in the creative industry. We'll help you to achieve the best grades. In return, we expect excellent attendance and punctuality and the willingness to engage in new and exciting ways of working.

## Careers and Destinations

- Higher Education
- Artist
- Curator
- Photographer
- Architect
- Journalist/Public Relations
- Interior Designer
- Graphic Designer
- Social Media Manager
- Newspaper Journalist
- Public Relations Officer
- Editorial Assistant
- TV Producer
- Film Maker
- Set Designer



# Art & Design – Fine Art

## A LEVEL - 2 YEARS

Entry Requirements: 5 GCSEs at grade 4-9 (A\*-C) including English + Maths

### What will I study?

The course will introduce you to new concepts and ways of working within art and will allow you to explore and gain confidence to express your own ideas. The emphasis is on practical work and the development of your own portfolio. You will also learn about the role art has played in history and in society today through visits to galleries, working with practising artists and your own independent research. Throughout the course, you will have opportunities to work alongside professional artists and designers to give you a greater understanding of the creative industries.

### How will I be assessed?

Examinations + assignments.

### What can I do next?

A Level Art and Design is widely recognised for developing an enquiring and critical mind as well as developing creative and technical potential, and is a useful qualification for applying for further study in a wide range of areas. You may wish to use your portfolio to support applications for a pre-degree foundation course or a higher course at degree level.

# Architecture, Interior & Product Design – 3D Design

## A LEVEL - 2 YEARS

Entry Requirements: 5 GCSEs at grade 4-9 (A\*-C) including English + Maths.

### What will I study?

Throughout the course you will explore a wide range of fundamental design skills providing you with the tools needed to be in control of your own design future. The course focuses on three main areas of design (Architecture, Interior and Product Design) however there are many other areas that you may wish to explore throughout the course. Throughout the course, you will have opportunities to work alongside professional designers to give you a greater understanding of the creative industries.

### How will I be assessed?

Examinations + assignments.

### What can I do next?

There is a large range of associated courses running at universities and colleges around the country, covering specialisms such as product design, interior design and architecture.





# Media Studies

## A LEVEL - 2 YEARS

Entry Requirements: 5 GCSEs at grade 4-9 (A\*-C)  
including English + Maths

### What will I study?

This course allows you to find out what goes on behind the scenes of media production, as well as looking at the ways in which the media try to influence you. You will investigate the ways in which the television, film, web and publishing industries work, learn to analyse media texts, and produce practical projects using media. You will have access to our state of the art specialist equipment to support practical work, including a suite of high spec Apple iMacs and MacBook Pros, green-screen, 3D screening, digital SLR cameras and professional video-editing software.

### How will I be assessed?

Examinations + assignments.

### What can I do next?

The range of practical and analytical skills developed during the course make A Level Media Studies an excellent preparation for higher education courses in any area. If you want to specialise there are a wide range of higher education media courses available, leading to employment opportunities in public relations, journalism, advertising, radio, film, television and digital media.



# Photography

## A LEVEL - 2 YEARS

Entry Requirements: 5 GCSEs at grade 4-9 (A\*-C)  
including English + Maths.

### What will I study?

You will develop both creative and technical camera and digital skills and build up a substantial portfolio of your own photography inspired by the work of established artists and photographers. You will be introduced to digital photography and explore creative ways to manipulate images, including use of Adobe Photoshop and hands-on image manipulation. You will also look at the work of other photographers and learn how to analyse and evaluate images using specialist terms and vocabulary.

### How will I be assessed?

Examinations + assignments.

### What can I do next?

At the end of the course you will have a full and interesting portfolio of photographic work. Photography is particularly useful if you want to go on to further study in art and design, media and film, photography and digital imaging, as well as being a valuable practical skill. You may wish to use your portfolio to support applications for a Foundation Diploma in Art & Design or specialist Degree level courses.



# Art & Design

## UAL LEVEL 3 EXTENDED DIPLOMA - 2 YEARS

Entry Requirements: 4 GCSEs at grade 4-9 (A\*-C)  
including English + Maths

### What will I study?

You will have opportunities to work alongside professional artists and designers to give you a greater understanding of the creative industries. You will experiment with a variety of both traditional and experimental techniques, materials and processes, learn new skills, build up a substantial portfolio of work, and gain an insight into the various specialisms that you could follow at a higher level. The course covers areas such as drawing and painting, graphic design, fashion design and textiles, 3D design, fine art, photography, ceramics and design crafts.

### How will I be assessed?

Presentations of sketchbooks + portfolio work.

### What can I do next?

Students from this course have gone on to pre-degree foundation and degree courses in art and design, fine art, textiles, graphic design, architecture, photography, fashion studies and interior design. The portfolio you produce over the course will enable you to show a wide range of relevant experience and skills for future interviews.



# Creative Media Production & Technology

## UAL LEVEL 3 EXTENDED DIPLOMA - 2 YEARS

Entry Requirements: 4 GCSEs at grade 4-9 (A\*-C)  
including English + Maths

### What will I study?

You will learn a range of digital media production skills including cinematography, sound-design, editing and web-design, and based on those skills you will choose a specialism for your final major project. You will have access to our state of the art specialist equipment, including a suite of Apple iMacs and MacBook Pros, green screen, 3D screening, digital SLR cameras, and expert video equipment.

### How will I be assessed?

Final project each year. Choose between a website, a music video or similar project.

### What can I do next?

The range of practical and analytical skills developed during the course make this course an excellent preparation for higher education courses in any area. If you want to specialise there are a wide range of higher education media courses available, leading to employment opportunities in public relations, journalism, advertising, radio, film, television and digital media. This course is perhaps best suited to students wanting to focus on a career in creative media production.

# Art & Design – Visual Arts & Creative Media

## UAL LEVEL 2 DIPLOMA – 1 YEAR

Entry Requirements: At least 2 Grade 3's (D) at GCSE

### What will I study?

The course covers drawing, film making, graphics, photography and painting and 3D areas such as modelling and ceramics. You will complete projects which allow you to learn new skills and explore your own ideas using a range of art and design media. Assignments are based on real-life design briefs and you will find out about how professional artists and designers work.

### How will I be assessed?

Presentation of your sketch books + portfolio.

### What can I do next?

Students from this course can progress onto the UAL Level 3 Extended Diploma in Art & Design or UAL Level 3 Extended Diploma in Creative Digital Media Production. You could study A Levels in subjects such as Art, Media Studies, 3D Design or Photography.

# Games Design (Concept Art & Character Design)

## UAL LEVEL 3 EXTENDED DIPLOMA – 2 YEARS

Entry Requirements: 4 GCSEs at grade 4–9 (A\*–C) including English + Maths

### What will I study?

To create innovative, exciting games, the industry needs more than just computer programmers. It needs artists and storytellers. This course will prepare you for working in the creative side of the games industry, and give you the skills to explore one of the world's most exciting new art-forms. Areas you will study will include concept art, character design and world building, 3D modelling, creating games and visual language and storytelling.

### How will I be assessed?

Portfolio work.

### What can I do next?

The portfolio you produce over the course will enable you to demonstrate a wide range of relevant experience and skills for future interviews. Our Creative and Digital Arts Career Ready programme will provide opportunities for you to gain work-experience and to connect in other ways with real professionals.





## Art & Design – Visual Arts & Creative Media

### UAL LEVEL 1 DIPLOMA - 1 YEAR

Entry Requirements: 2 GCSEs at grade 2 (E) and 1 GCSE at grade 1 (F)  
Students without GCSEs will be asked to complete a diagnostic assessment

#### What will I study?

This course has been designed to provide students with an introduction to the creative sector. This will enable you to make informed future progression choices while developing and applying your knowledge and acquiring a range of relevant practical, communication and personal development skills. The course covers drawing, film making, graphics, photography, painting, animation and 3D design. You will complete projects which allow you to learn new skills and explore your own ideas using a range of art and design media.

#### How will I be assessed?

Presentation of sketchbooks + portfolio.

#### What can I do next?

Students from this course can progress onto the UAL Level 2 Art and Media course or another L2 course in another subject offered at Longley Park.

## Performing Arts (Drama)

### BTEC LEVEL 3 EXTENDED DIPLOMA

Entry Requirements: 5 GCSEs at grade 4–9 (A\*–C) including English and Maths. Previous study of drama is useful, but not essential. However you do need to be confident and willing to take part in performances.

#### What will I study?

This is a practical course with an emphasis on developing your skills and confidence as a performer. You will study a range of acting techniques across different theatrical styles, including analysing the work of practitioners. Group performance workshops will help you develop and apply these skills in your own acting and you will take part in a number of performances throughout the year.

#### What can I do next?

Performing Arts students go on to a variety of different careers. Some go on to study specialist Drama and Performing Arts courses at University or Drama School. Others will go on to academic degrees and careers across a range of sectors using the self-confidence and communication and presentation skills gained on the course.

#### How will I be assessed?

This is a practical course which has no written exams. You will be assessed through practical performance and written coursework. One of your performances will be assessed by an external verifier as well as your teachers.





# English

Studying A Level English Language or Literature will give you the opportunity to develop your understanding of the ways writers communicate across many different genres and forms. You will explore the influence of linguistic, literary, cultural, social and historical contexts. You will develop your analytical skills and expertise, giving you the ability to delve beneath the surface meaning of texts, to explore hidden and implied meanings at another level. You will learn about how the English language has developed and changed and how it can be used for many different purposes. Studying English at A Level will help you to develop skills in research, written and verbal communication, debate and discussion.

English subjects are highly regarded by universities as they give students the opportunity to develop skills in critical reading, analysis, evaluation and communication. These are skills that are much sought after in the workplace – particularly in areas such as the media, journalism, law, research, social work and education.

## Careers and Destinations

- Higher Education - Degree in Linguistics
- Public Relations/ Journalism
- Writing
- Speech and Language Therapist
- Marketing
- Teaching
- Management
- Librarian
- Speech and Language Therapy Theatre Production
- Creative Journalism
- Law

# English Literature

## A LEVEL - 2 YEARS

Entry Requirements: 5 GCSEs at grade 4-9 (A\*-C)  
including English + Maths

### What will I study?

You will read, discuss, analyse and write about a wide range of literature. You will develop your critical skills and learn how to present your ideas effectively. You will read widely and independently, engage creatively and apply your knowledge of literary analysis and evaluation in speech and writing. You'll explore the contexts of the texts you're reading and deepen your understanding of the changing traditions of literature in English. The course features a fascinating mix of texts from across the genres.

### How will I be assessed?

Examination + coursework.

### What can I do next?

The critical, analytical and communication skills developed during the course make English Literature an excellent preparation for higher education in any area. If you want to specialise, there are a wide range of courses in English, journalism, media and cultural studies.



# English Language

## A LEVEL - 2 YEARS

Entry Requirements: 5 GCSEs at grade 4-9 (A\*-C)  
including English + Maths

### What will I study?

This course combines a critical and creative approach. You will analyse and produce texts, demonstrating understanding and skill in how the English language works across a variety of contexts. You will learn about how language works on many different levels. The course will involve studying how we communicate in written and spoken texts according to our social group, region, occupation, gender and ethnicity. You will also learn about how children learn to speak, read, and write, and about how language has changed across time.

### What can I do next?

The study of English Language will develop your confidence in writing and analysis and is, therefore, a valued subject for both university-level study and employment. Some students choose to specialise in areas such as language, linguistics, phonetics and speech and language therapy at university; others go on to further study and work in areas such as teaching, journalism, law, marketing, librarianship and management.

### How will I be assessed?

Examination + coursework.





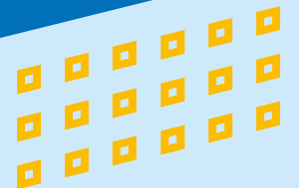
# Humanities

Humanities subjects give students the opportunity to learn more about the world in which we live. As a humanities student you will explore the ways in which people interact with each other and the many varied reasons behind events, beliefs, opinions and actions. You will learn to apply the moral, ethical, cultural and ideological approaches that bring together this fascinating group of subjects. You will need to keep up to date with current affairs and should have a keen interest in how the decisions made in the current moment draw on past events and help to shape the future.

Humanities subjects are highly regarded by universities as they give students the opportunity to develop skills in critical reading, analysis, evaluation and communication. These are skills that are much sought after in the workplace – particularly in areas such as the media, journalism, law, research, social work and education.

## Careers and Destinations

- Higher Education
- Teaching
- Journalism
- Public Services
- Researcher
- Government
- Politician
- Historian
- Care Professional
- Lawyer
- Social Worker
- Forensic Science





# Geography

## A LEVEL - 2 YEARS

Entry Requirements: 5 GCSEs at grade 4-9 (A\*-C)  
including English + Maths

### What will I study?

You will learn about how we shape the world we live in, and how we can manage the big issues facing humanity, such as population growth, climate change and increasing demand for limited resources such as water. You will learn about the geography of the local area, in the UK and around the world. You will explore new human environments such as world mega-cities, alongside dynamic physical environments such as those created by earthquakes and volcanoes. Fieldwork is an important part of the course, and you will have the opportunity to carry out your own study allowing you to develop a wide range of skills which are valued by employers and universities.

### How will I be assessed?

Examinations + fieldwork investigation.

### What can I do next?

Geography is an extremely versatile subject which is a valuable foundation for Science, Humanities and Arts subjects at Higher Education. Geography students are highly sought after both by universities and employers due to the unique range of skills they develop and their in depth understanding of the world. There are a wide range of university courses which value Geography as an A Level and the subject is particularly useful for students interested in further study, or work, in the areas of journalism, travel and tourism, civil engineering, surveying, environmental science, environmental law, economics, architecture, local and central government, the police, global development, scientific research and meteorology.

# Government & Politics

## A LEVEL - 2 YEARS

Entry Requirements: 5 GCSEs at grade 4-9 (A\*-C)  
including English + Maths

### What will I study?

Why do we have rules in Society? What is the point of the Government system? How does our system work and how does everyone play a part in it? Who holds the power to make things happen and create change? If you are interested in how our society functions then Government and Politics may be right up your street. You will learn about the way decisions made by government influence people's lives, and the way that people can participate in local, national and global politics.

### How will I be assessed?

Written examination.

### What can I do next?

As well as offering you insights into the ways in which the British and American political systems work, A Level Politics will help you to develop an enquiring and critical mind. The course provides an excellent background for careers in law, journalism, the caring professions, teaching and a range of management and business areas. It teaches you to think analytically and philosophically. As such it is well respected by universities and employers alike.

# Psychology

**A LEVEL - 2 YEARS**

Entry Requirements: 5 GCSEs at grade 4-9 (A\*-C)  
including English, Maths + Science

## What will I study?

Psychology is the scientific study of mind and behaviour, attempting to explain why people behave in the ways they do. You will discover and analyse what psychologists have found out about key issues such as the structure of memory, understanding social influence and the cause of mental illness. You will study major perspectives in the areas of biological and cognitive, behavioural psychology as well as research methods, data handling and statistics. You will also study clinical, health and criminal psychology.

## What can I do next?

Psychology is one of the fastest growing subjects in Higher Education. A Level Psychology is not a requirement for a degree but will give you a useful insight into the subject. Psychology graduates are highly sought after due to their unique mix of skills in literacy, numeracy and science. Psychology is also beneficial for work in marketing, education, nursing, advertising, social work, HR and public services.

## How will I be assessed?

Examination.

# History

**A LEVEL - 2 YEARS**

Entry Requirements: 5 GCSEs at grade 4-9 (A\*-C)  
including English + Maths

## What will I study?

You will study the French Revolution, arguably the most significant event in world history, looking in detail at the reasons for it, the main events of it and the events that followed it. You will also study British history between 1851 and 1974 and will learn how the British society we see today was formed including how it was influenced by, and further developed, the principles of the French Revolution.

## How will I be assessed?

Written examination + coursework.

## What can I do next?

History is an excellent subject for the study of a wide range of university courses including law, economics, business studies, philosophy, English, archaeology, politics and social sciences. If you choose to specialise in History there are a wide range of courses available leading to employment in all sorts of fields, including law, journalism, business, teaching and the museum and heritage sector.





# Religious Studies

## A LEVEL - 2 YEARS

Entry Requirements: 5 GCSEs at grade 4-9 (A\*-C)  
including English + Maths

### What will I study?

Religion is a powerful force in our world, influencing the way people conduct their lives and shaping the way that people think. You will explore philosophical and ethical perspectives of belief, from faith, scientific, agnostic and atheist positions. You will also compare and contrast all major traditions; Islam, Christianity, Judaism, Hinduism and Buddhism.

### How will I be assessed?

Examination.

### What can I do next?

An A Level in Religious Studies is really useful for studying wider Humanities, English and Social Science subjects at university, such as history, sociology, politics, law, anthropology and philosophy. The course develops analytic, interpretation and argument skills. Also, having a contextual understanding of alternative world perspectives provides a solid grounding when it comes to interpreting wider academic theory and concepts. As such, these skills, and the wider understanding of moral issues, can be particularly useful for students keen to study medicine, caring and the media. Ultimately, having a deeper understanding of the world demonstrates an ability to be tolerant and empathetic to those within society, which is very attractive to prospective employers in the future.



# Sociology

## A LEVEL - 2 YEARS

Entry Requirements: 5 GCSEs at grade 4-9 (A\*-C)  
including English, Maths + Science

### What will I study?

Sociology is the study of the individual and society and will appeal to students who are interested in investigating how our everyday lives are shaped by factors such as class, gender and ethnicity. Sociology will develop your research skills and your ability to weigh up evidence and arguments. You will look at human behaviour by studying social groups and the influences on their actions, ideas and beliefs. You will also look at the different methods used by sociologists to collect information and you will study the various theoretical perspectives that aim to explain why society is organised the way it is.

### How will I be assessed?

Examination.

### What can I do next?

A Level Sociology is a valuable subject for a wide range of careers and higher education courses. You may wish to look specifically at areas which involve an understanding of people and social relationships, such as journalism, health care, social work, education, the public services, marketing and management.





# Applied Psychology

**BTEC LEVEL 3 EXTENDED CERTIFICATE - 2 YEARS**

Entry Requirements: 5 GCSEs at grade 4-9 (A\*-C)  
including English, Maths + Science

## What will I study?

Psychology is the scientific study of mind and behaviour, attempting to explain why people behave in the ways they do. You will discover approaches in psychology including biological, social and cognitive explanations of behaviour. This course combines fascinating content with scientific rigour, statistical analysis and combines equally well with science or humanities subjects. You will study major perspectives in psychology and see how research has been applied to the areas of business, gender and criminological psychology. You will also look at the application of psychology to health and wellbeing with an emphasis on addiction, gambling and stress.

## How will I be assessed?

Examination + assignments.

## What can I do next?

Studying Psychology at Level 3 is not a requirement for a degree but will give you a useful insight into the subject. Psychology graduates are highly sought after due to their unique mix of skills in literacy, numeracy and science. Psychology is also beneficial for work in marketing, education, nursing and the health care sector, social work, HR and public services.

# Criminology

**WJEC LEVEL 3 DIPLOMA - 2 YEARS**

Entry Requirements: 5 GCSEs at grade 4-9 (A\*-C)  
including English + Maths

## What will I study?

Criminology is the study of crime and criminal behaviour. You will learn about different types of crime and how perceptions of crime may differ. You will also gain an understanding of why people commit crime and how the criminal justice system works. You will study real life situations and cases and apply criminological theories to evaluate the effectiveness of social control and criminal justice policies.

## What can I do next?

Studying Level 3 Criminology will help you gain access to a wide range of higher education courses, including Criminology, Psychology, Sociology and Law. The qualification also provides students with valuable skills and understanding that can lead to a career in a number of areas, such as journalism, law, social work, education and the public services.

## How will I be assessed?

Examination + controlled assessment.



# Health & Social Care

In Health and Social Care there are some amazing opportunities for you to become involved with. Previous years have seen students visit local universities including Sheffield Hallam and Sheffield University. Students participated in a Health and Social Care Taster Day where there was a carousel of Health Professionals available to meet and receive advice about various professions within the Health Sector. We also provide additional qualifications such as First Aid and our students have the opportunity to be part of the NHS cadet placement scheme. We are really proud of the achievements of our students when they leave us to either progress onto university, Apprenticeships or employment.

## Careers and Destinations

- Higher Education
- Further professional study
- Nursing
- Paramedic
- Occupational Therapy
- Social Worker
- Adult or child social care
- Counsellor
- Family Support Worker
- Health Visitor
- Welfare Rights Officer
- Mental Health Nursing
- Youth Worker

# Health & Social Care

## **BTEC LEVEL 3 EXTENDED CERTIFICATE - 2 YEARS**

Entry Requirements: 4 GCSEs at grade 4-9 (A\*-C)  
including English + Maths

### **What will I study?**

This course covers health, care of older people, individuals with specific needs and also early years (care and education). You will find out about the needs of different client groups and how they are supported in different Health and Social Care settings. This course includes essential work placement so you develop practical skills and work alongside Health and Social Care Professionals.

### **How will I be assessed?**

Examinations + assignments.

### **What can I do next?**

This qualification will help you to progress to Higher Education on diploma or degree courses related to social work, nursing, paramedic or occupational therapy. We work in partnership with Sheffield Hallam University, and they will guarantee an interview for nursing courses provided you meet the entry requirements. If you do not already have Grade C in GCSE English, Maths or Science, it is important that you re-take these to make sure that you have the qualifications you need for applications to HE and health-related career routes.



# Health & Social Care

## **BTEC LEVEL 3 NATIONAL EXTENDED DIPLOMA - 2 YEARS**

Entry Requirements: 4 GCSEs at grade 4-9 (A\*-C)  
including English + Maths

### **What will I study?**

You will learn about the care needs of different groups, including the elderly, young children and people with disabilities and how care professionals meet these needs. Assignments and projects are based on realistic workplace situations and you will learn about the standards expected in care settings. The course includes essential work placements so you can develop your practical skills and work alongside Health and Social Care professionals.

### **What can I do next?**

Students from this course have gone on to university to study social work, adult social care, child social care, nursing, paramedic studies, mental health nursing and occupational therapy. We work in partnership with Sheffield Hallam University, Sheffield University and many others who offer a range of courses in related areas. Some students go on to employment in a health and social care setting.

### **How will I be assessed?**

Examination, assignments + work placement observation.







# Health & Social Care

## BTEC LEVEL 3 DIPLOMA - 2 YEARS

Entry Requirements: 4 GCSE's at grade 4-9  
(C – A\* including Maths + English)

### What will I study?

This course allows you to discover various topics around health and social care. You will learn about how we grow and develop as humans, from conception through childhood, into adulthood and finally old age. Additionally, you will have the opportunity to learn about the specific roles and professions within the health and social care sector as well as their individual responsibilities. Assignments are based on realistic workplace scenarios to further support your awareness of the expectations of working in health and social care. Furthermore, work experience is an essential part of the course and will give you an opportunity to practice skills and work alongside other professionals.

### How will I be assessed?

Examinations, assignments + work placement records.

### What can I do next?

This qualification will help support your progress to higher education on diploma or degree courses in a related subject area. This includes courses such as nursing, social work and occupational therapy. We work in partnership with Sheffield Hallam University and Sheffield University who both offer a range of health and social care related courses. If you don't already have a grade 4 (C) or above in English, Maths or Science, these should be studied alongside the course to make sure that you have the qualifications required to apply for HE and health related courses.

# Health & Social Care

## BTEC LEVEL 2 CERTIFICATE - 1 YEAR

Entry Requirements: At least 2 Grade 3's (D) at GCSE

### What will I study?

You will learn about the care needs of different groups including the elderly, young children and people with disabilities and how care professionals meet these needs. This includes human body systems and care of disorders, nutrition and healthy living, human lifespan and development and communication. Assignments and projects are based on realistic workplace situations and you will learn about the standards expected in care settings. Work experience is an essential part of the course.

In addition to the main programme you will also complete an additional BTEC work skills qualification.

### How will I be assessed?

Examinations + assignments.

### What can I do next?

Students from this course have gone on to study the BTEC Level 3 Extended Certificate in Health and Social Care, the BTEC Level 3 Extended Diploma in Health and Social Care course or other Level 3 qualifications such as Childcare. With further training or study you could go on to a career in areas such as residential or health care or teaching support.



# Health & Social Care

## BTEC LEVEL 1 INTRODUCTORY DIPLOMA - 1 YEAR

Entry Requirements: 2 GCSEs at grade 2 (E) and 1 GCSE at grade 1 (F)  
Students without GCSEs will be asked to complete a diagnostic assessment

### What will I study?

You will find out about opportunities for work in the Care sector and develop the personal skills you need to care for people. Some of the units include healthy lifestyles, communication and care services. This course is all about improving your confidence and personal skills. It is a personalised learning programme - which means that it is tailored to what you need in order to progress on to further training, employment or study.

### How will I be assessed?

Practical projects, written assignments, tasks + observations.

### What can I do next?

Students from this course have gone on to Level 2 courses including sports, art and design, media, business, health, childcare and science. Some students have then gone on to advanced study and to university. Others have chosen employment or apprenticeships.



# Vocational Studies

## BTEC LEVEL 1 INTRODUCTORY DIPLOMA - 1 YEAR

Entry Requirements: 2 GCSEs at grade 2 (E) and 1 GCSE at grade 1 (F)  
Students without GCSEs will be asked to complete a diagnostic assessment

### What will I study?

This course is all about improving your confidence and personal skills. It is a personalised learning programme - which means that it is tailored to what you need in order to progress on to further training, employment or study.

### How will I be assessed?

Practical projects, written assignments, tasks + observations.

### What can I do next?

Students from this course have gone on to Level 2 courses including sports, art and design, media, business, health, childcare and science. Some students have then gone on to advanced study and to university. Others have chosen employment or apprenticeships.



# Maths

Maths is a really exciting subject which opens many doors for progression; it is highly respected by employers and Universities. We emphasise the problem solving skills required for applying mathematics to the real world. You will be given the opportunity to take part in both individual and team mathematics competitions, competing against students from across the country. If you achieve a really high result you could even be invited to compete at the very prestigious British Mathematics Olympiad. Mathematics is an extremely rewarding subject and we will support you to achieve your potential at whichever level you are working. Our extensive range of workshops will provide you with the extra individual support required for you to achieve the highest grade possible.

## Careers and Destinations

- Higher Education
- Engineering
- Computer Science
- Medicine
- Social Science
- Business
- Accounting
- Science
- Secondary School Teacher
- Data Analyst
- Statistician



# Further Mathematics

## A LEVEL - 2 YEARS

Entry Requirements: 5 GCSEs at grade 4-9 (A\*-C)  
including English plus a grade 8(A) in Maths.

### What will I study?

You will study A Level Mathematics in your first year and then study A Level Further Mathematics in your second year. As well as allowing you to study mathematics in more depth, Further Mathematics gives you a much broader mathematical background ensuring you are highly employable in all mathematical fields. You will study pure mathematics which will extend your knowledge of topics such as algebra, coordinate geometry and trigonometry. You will also learn new concepts such as calculus. Alongside pure mathematics you will study mechanics and statistics.

### How will I be assessed?

Examinations.

### What can I do next?

Further Mathematics students are particularly well prepared for degree level courses in mathematics, engineering, science, medicine, dentistry, computing, finance, economics and other mathematics based subjects.

# Mathematics

## A LEVEL - 2 YEARS

Entry Requirements: 5 GCSEs at grade 4-9 (A\*-C)  
including English plus a grade 6(B) in Maths

### What will I study?

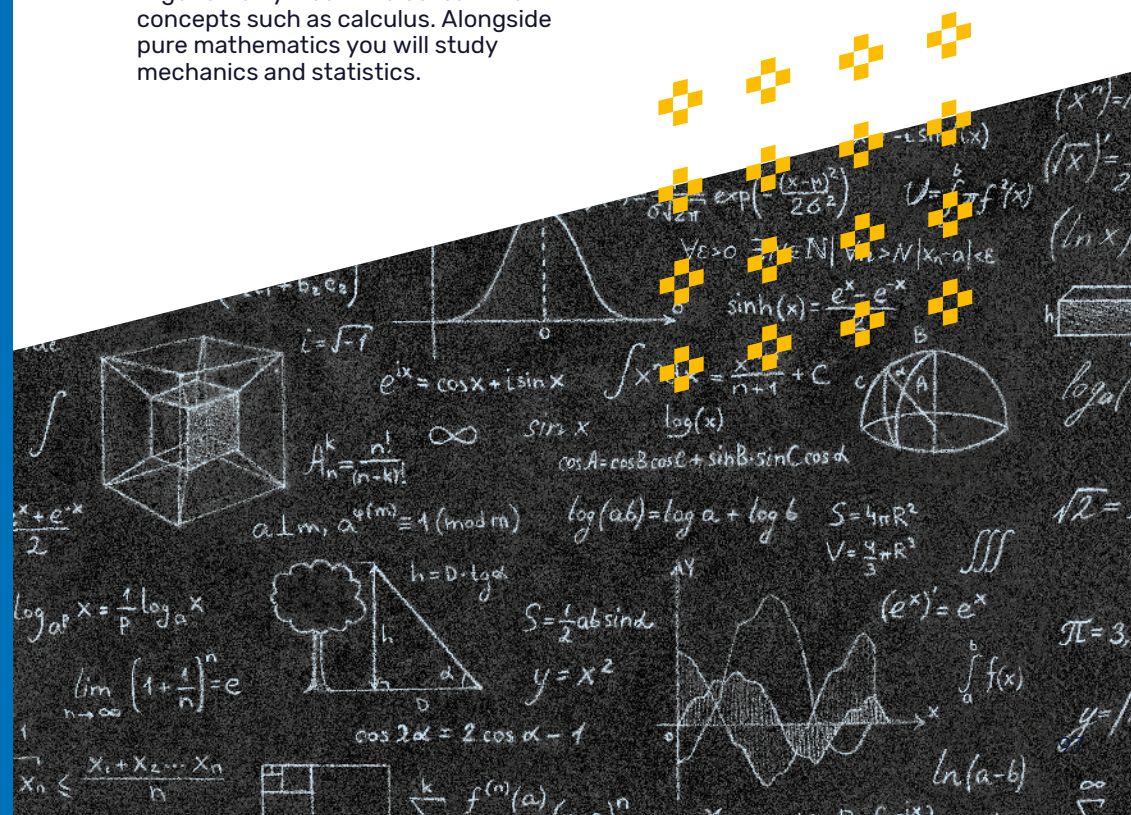
You will study pure mathematics which will extend your knowledge of topics such as algebra, coordinate geometry and trigonometry. You will also learn new concepts such as calculus. Alongside pure mathematics you will study mechanics and statistics. Statistics will build on and extend your data and probability knowledge, mechanics looks at the physics of motion and forces.

### What can I do next?

A Level Maths is essential for Higher Education courses in computer science, engineering, physics or mathematics itself. It is also highly desirable for science and social sciences, any medically-related qualification, business and accounting.

### How will I be assessed?

Examinations.



# Core Maths

## LEVEL 3 CERTIFICATE - 1 YEAR

Entry Requirements: 4 GCSEs at grade 4-9 (A\*-C)  
including English + Maths

### What will I study?

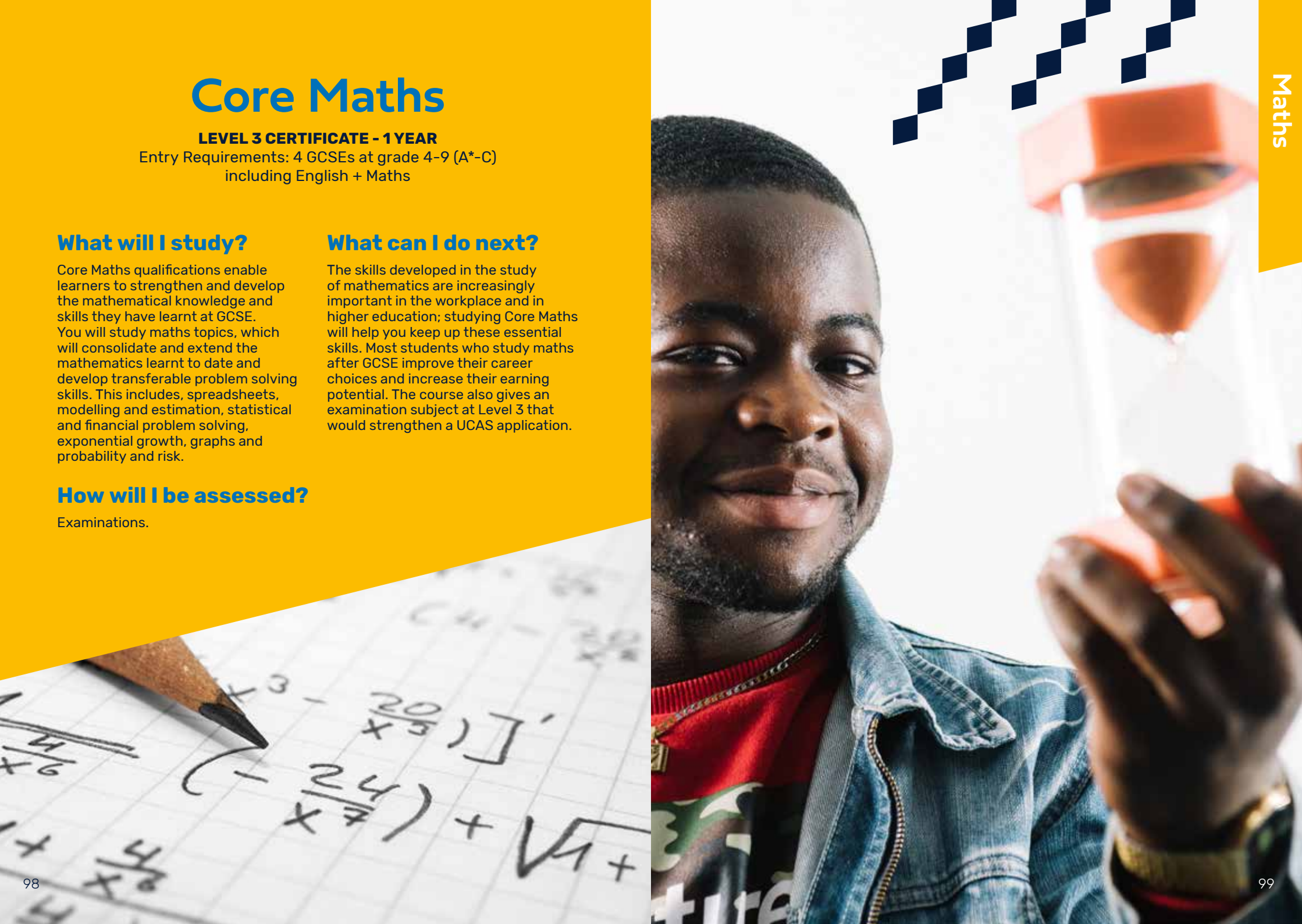
Core Maths qualifications enable learners to strengthen and develop the mathematical knowledge and skills they have learnt at GCSE. You will study maths topics, which will consolidate and extend the mathematics learnt to date and develop transferable problem solving skills. This includes, spreadsheets, modelling and estimation, statistical and financial problem solving, exponential growth, graphs and probability and risk.

### How will I be assessed?

Examinations.

### What can I do next?

The skills developed in the study of mathematics are increasingly important in the workplace and in higher education; studying Core Maths will help you keep up these essential skills. Most students who study maths after GCSE improve their career choices and increase their earning potential. The course also gives an examination subject at Level 3 that would strengthen a UCAS application.





# Science

We are extremely proud of the work our students produce and the wide range of scientific skills they develop as our courses are taught in a very practical way. Our teachers come from a wide range of industrial backgrounds and are able to offer students real-life context to learning. Graduating students have gone on to study Medicine; Veterinary Science; Pharmacy; Radiography; Electrical, Aerospace, Automotive and Mechanical Engineering; Biomedical Sciences and lots of other courses, many at Russell Group universities. We encourage our students to take up a range of opportunities, including NHS experience through our volunteering links; becoming part of national data collection on climate change with the Peak District National Parks or gaining one of the prestigious placements or with the Nuffield Foundation working with university professionals on real projects.

## Careers and Destinations

- Higher Education
- Medicine
- Dentistry
- Physiotherapy
- Veterinary Medicine
- Forensic Science
- Pharmacy
- Biochemistry
- Psychologist
- Radiography
- Biochemist
- Forensic Scientist
- Pharmacist
- Food Scientist
- Nutritionist





# Biology

## A LEVEL - 2 YEARS

Entry Requirements: 5 GCSEs at grade 4-9 (A\*-C) including English, plus Maths + 2 Science GCSEs at 6 (B)

### What will I study?

Biology is related to many areas of our life including food safety, agriculture, medicine, sport and scientific research. You will learn about the nature of life from the molecules and chemicals that life is built upon to the way populations of the world's living organisms develop and live together. Biology is a very hands-on subject and there will be regular practical work in class. Your study will involve some dissection of animal and plant material. Data analysis also forms an integral part of the course so you need to be confident using Maths. If you are not studying A Level Chemistry, you will need to work with your Biology teachers to cover the basic biochemistry needed for this course.

### How will I be assessed?

Examination + practical endorsement.

### What can I do next?

Biologists can be found in many places, including medicine, dentistry, physiotherapy, veterinary medicine, laboratory work, forensics, pathology and nursing. Biology is also a well respected A Level for a wide range of non-science related courses and careers because it helps you to develop analytical, practical and investigative skills.

# Chemistry

## A LEVEL - 2 YEARS

Entry Requirements: 5 GCSEs at grade 4-9 (A\*-C) including English, plus Maths + 2 Science GCSEs at 6 (B)

### What will I study?

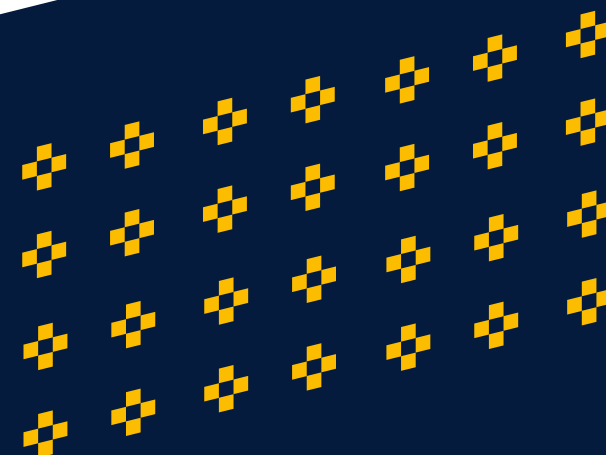
Chemistry allows you to learn more about the structure of the world around you through experiments and find out about the chemical reactions that we encounter every day, whether it be in breathing, baking or driving a car. You will study atomic structure, bonding and the periodic table. Other key topics studied include chemical kinetics, equilibrium and molar calculations. You will develop new practical skills in organic synthesis, extraction and analysis whilst being introduced to new topic areas such as Transition Metals.

### What can I do next?

Chemistry develops lots of skills that are relevant for employment or study at a higher level, such as problem solving, scientific method, practical work and use of number. Chemistry is essential if you want to study medicine, dentistry, pharmacy, forensic science or veterinary science at a higher level. Other popular choices for progression include chemistry, chemical engineering and biochemistry. Chemistry is often a desired choice for entrance to other science-based courses and occupations.

### How will I be assessed?

Examination + practical endorsement.



# Physics

## A LEVEL - 2 YEARS

Entry Requirements: At least 2 Grade 3's (D) at GCSE

### What will I study?

Physics gives you the opportunity to investigate and understand some of the fundamental laws of the universe, ranging from the tiniest particles of matter to vast star systems. You will cover topics such as mechanics, subatomic particle physics, electricity and theory of waves. You will also study topics which include gravitational, electrical and magnetic forces, nuclear and thermal physics and oscillations.

### How will I be assessed?

Examination + practical endorsement.

### What can I do next?

A Level Physics is a good starting point for further study of natural science and engineering related courses. It also supports progression into subjects such as medicine and radiography and is a good background for courses in many other fields, especially those that rely on numeracy and logical thought.



# Applied Human Biology

## BTEC LEVEL 3 EXTENDED CERTIFICATE - 2 YEARS

Entry Requirements: 5 GCSEs at grade 4-9 (A\*-C) including English, Maths + Science

### What will I study?

How the human body works, in good and poor health. Functioning at a genetic, cellular and tissue level. You will gain understanding of how this knowledge can be applied in order to improve diagnostic and health outcomes as well as the effects of micro-organisms on human health.

### How will I be assessed?

External assessments + internal assignments.

### What can I do next?

Students can go on to university to study biomedical science, medical genetics, health and human sciences, human biology, biochemistry, podiatry, forensic science, biology, biosciences, genetics and molecular biology, microbiology and molecular biology, veterinary science, wildlife conservation, radiotherapy, radiography and a range of other courses.

# Applied Science

## **BTEC LEVEL 3 DIPLOMA - 2 YEARS**

Entry Requirements: 4 GCSEs at grade 4-9 (A\*-C)  
including English, Maths + Science

### **What will I study?**

You will study all of the main sciences, Chemistry, Biology and Physics in detail. You will learn about how science knowledge and skills are used in a variety of scientific workplaces, analytical sciences and biomedical sciences.

### **How will I be assessed?**

Examinations + assignments.

### **What can I do next?**

Our BTEC Applied Science students have gone on to university to study gateway to medicine, chemical engineering, pharmaceutical science biomedical science, medical genetics, health and human sciences, human biology, biochemistry, podiatry, forensic science, biology, biosciences, genetics and molecular biology, microbiology and molecular biology, veterinary science, wildlife conservation, radiotherapy and radiography. Many of these students have gone to the prestigious Russell Group Universities. Students have also taken up apprenticeships including microbiology and surgical instrumentation.

# Applied Science

## **BTEC LEVEL 3 EXTENDED DIPLOMA - 2 YEARS**

Entry Requirements: 4 GCSEs at grade 4-9 (A\*-C)  
including English, Maths + Science

### **What will I study?**

You will study all of the main sciences, Chemistry, Biology and Physics in detail. You will learn about how science knowledge and skills are used in a variety of scientific workplaces, analytical sciences and biomedical sciences.

### **How will I be assessed?**

Examinations + assignments.

### **What can I do next?**

Our BTEC Applied Science students have gone on to university to study chemical engineering, pharmaceutical science biomedical science, medical genetics, health and human sciences, human biology, biochemistry, podiatry, forensic science, biology, biosciences, genetics and molecular biology, microbiology and molecular biology, veterinary science, wildlife conservation, radiotherapy and radiography. Many of these students have gone to the prestigious Russell Group Universities. Students have also taken up apprenticeships including microbiology and surgical instrumentation.



# Applied Science

**BTEC LEVEL 2 EXTENDED CERTIFICATE - 1 YEAR**  
Entry Requirements: At least 2 Grade 3's (D) at GCSE,  
including Science

## What will I study?

You will carry out experiments and learn how science is used in different jobs. The course covers Biology, Chemistry and Physics and the skills needed by scientists to collect, analyse and interpret data. Assignments are based on real applications of science in areas such as forensic science, food technology and environmental science.

## How will I be assessed?

You will be assessed through practical projects and assignments and two external exams.

## What can I do next?

Students from this course have gone on to do the BTEC Level 3 Extended Diploma in Applied Science.



# Engineering

**BTEC LEVEL 3 EXTENDED CERTIFICATE - 2 YEARS**  
Entry Requirements: 5 GCSEs at grade 4-9 (A\*-C)  
including English, Maths + Science

## What will I study?

You will learn about mechanical and electrical engineering principles and applications and how to solve real life engineering problems. The course involves practical work on electrical circuits, forces, materials testing and servicing engineered components.

## What can I do next?

You can progress to study engineering at university or apply for technical apprenticeships or technician jobs in the engineering industry.

## How will I be assessed?

External assessments + internal assignments.



# Sport

We continue to be impressed by the goals that our students aim for and achieve. We will help you to develop the skills and qualities needed for your chosen profession. Through links with employers and the local community you will be given the opportunity to enhance your skills, knowledge and experience in a variety of sports based contexts. These include links with professional sports clubs such as Sheffield Wednesday FC, National Governing Bodies, charities, voluntary organisations and local schools. We also has a fantastic enrichment programme that you can also get involved in, either by playing, coaching, umpiring and scoring or volunteering. Sports you get involved in and play include football, basketball, table tennis, badminton, tennis, handball, indoor cricket and dodgeball. We also has a fully functional gym that sport students will be able to use for some assignments, and also to train outside of lesson times free of charge. You will also have the opportunity to gain additional qualifications such as First Aid, Fitness Instructors qualification plus more.

## Careers and Destinations

- Higher Education
- Sports Coaching
- Sports Science
- Fitness and Wellbeing
- PE Teaching
- Sports Therapy
- Leisure Management
- Sports Psychology
- Sports Journalism
- Sports Development



# Sports Development, Coaching & Fitness

**BTEC LEVEL 3 NATIONAL EXTENDED CERTIFICATE - 2 YEARS**

Entry Requirements: 4 GCSEs at grade 4-9 (A\*-C)  
including English + Maths

## What will I study?

You will cover topics like anatomy, fitness testing, sports leadership, and sports psychology. Throughout the course you will be involved in both theoretical and practical work. You will explore sports development and become involved in community sports and organise events such as coaching sessions for school children. Projects and assignments are designed so that you find out what it is really like to work in the industry.

## What can I do next?

Students from this course have gone on to university to study sports coaching, sports science, sport psychology, sport journalism, fitness and wellbeing, PE teaching, sports therapy and leisure management, sport development as well as employment in the sports and leisure industries. Students have also gone on to study non-sport related courses, which we would be happy to discuss with you.

## How will I be assessed?

Examinations, practical projects, assignments + presentations.

# Sports Development, Coaching & Fitness

**BTEC LEVEL 3 NATIONAL EXTENDED DIPLOMA - 2 YEARS**

Entry Requirements: 4 GCSEs at grade 4-9 (A\*-C)  
including English + Maths

## What will I study?

You will cover topics like anatomy, sport psychology, fitness testing, sports leadership, and coaching for performance. Throughout the course you will be involved in both theoretical and practical work. You will explore sports development and become involved in community sports and organise events such as coaching sessions for school children. Projects and assignments are designed so that you find out what it is really like to work in the industry.

## What can I do next?

Students from this course have gone on to university to study sports coaching, sports science, sport psychology, sport journalism, fitness and wellbeing, PE teaching, sports therapy and leisure management, sport development as well as employment in the sports and leisure industries. Students have also gone on to study non-sport related courses, which we would be happy to discuss with you.

## How will I be assessed?

Examinations, practical projects, assignments + presentations.





# Sport

## BTEC LEVEL 2 CERTIFICATE - 1 YEAR

Entry Requirements: At least 2 Grade 3's (D) at GCSE

### What will I study?

You will study subjects like: Anatomy and Physiology for Sports Performance, Work Experience in Sport, Training for Personal Fitness. You will be working in the community to provide additional experience; your assignments will be vocationally related to help you to understand what you need to complete.

There will be a weekly practical session.

### How will I be assessed?

Examinations, practical + written assignments.

In addition to the main programme you will also complete a BTEC work skills qualification.

### What can I do next?

You may wish to go on to study the BTEC Extended Diploma in Sport Development Coaching & Fitness or a combination of BTEC Level 3 Subsidiary Diplomas in differing subject areas. Other students have also gone on to complete apprenticeships or employment in the fitness and leisure industry.





# GCSEs, Functional Skills & ESOL

We are committed to helping students develop their skills in English and Maths, as these are essential for success in other subjects. If you do not already have a grade 4/C in English and/or Maths you will work towards these during your time at Longley Park. We will work with you to decide on the right level course for you. For some people the GCSE courses are ideal. In other cases it might be sensible to build up your existing skills before moving on to the next level. GCSE Science is important for career routes in health and teaching.



# Maths

## GCSE AND FUNCTIONAL SKILLS

Entry Requirements: We will use your previous grade and an initial assessment to help us to identify the best course for you. We offer GCSE courses and also Functional Skills for students who need more time to develop their skills.

## How will I be assessed?

Examinations.

We offer several courses leading to qualifications in Mathematics. We will work with you to identify your current level at the start of the course. You will study Maths at the right level to develop your skills.

## What will I study?

You will build on the work you did at your previous school and improve your maths skills.

# English

## GCSE AND PART-TIME ESOL, FUNCTIONAL SKILLS

Entry Requirements: We will use your previous grade and an initial assessment to help us to identify the best course for you. We offer GCSE and Functional Skills courses and Entry Level, Level 1 and Level 2 for students who need more time to develop their skills.

We offer several courses leading to qualifications in English. We will complete a diagnostic assessment with you to find out which course will be most suitable for your needs. If English is not your first language we can tailor the course to help you develop your understanding and confidence.

## What will I study?

On our English courses, we will help you improve your skills in punctuation, spelling and grammar. The GCSE English Language course involves the study of both fiction and non-fiction, texts from different cultures, creative writing and spoken language. You

will also learn to analyse the different techniques used in different forms of writing. The course will also help you to improve your independent study skills. Our Functional Skills and ESOL courses are assessed across three units – Speaking and Listening, Reading and Writing. We will work with you to develop your skills in these areas and support you to progress onto the GCSE course.

## How will I be assessed?

These courses are all assessed by examination.





# Science: Biology

## GCSE - 1 YEAR

**Entry Requirements:** You should have the equivalent of a GCSE grade 2/E or better in Single or Dual Science, Applied Science or Biology and also in Maths.

### What will I study?

You will build on the biological science you studied at school. The course covers three main areas, understanding ourselves by looking at the structure and main system of the body, understanding our environment including plants and pollution and the world of micro-organisms including bacteria. This is a very hands-on subject and you will take part in practical work and a field trip. Your study will involve some dissection of biological material.

### How will I be assessed?

Examinations.

# Full-Time ESOL

## ENGLISH FOR SPEAKERS OF OTHER LANGUAGES

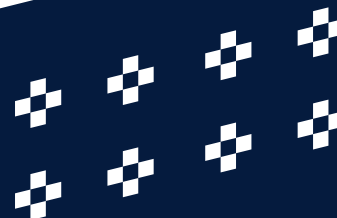
**Entry Requirements:** Our full time ESOL course is designed to support students at Entry 1 and Entry 2. You do not need any formal qualification as you will be assessed at the beginning of term to check you are studying at the correct level.

### What will I study?

You will work in a supportive environment to develop your English skills in reading, writing, and speaking and listening. Classes are grouped by level so you will be studying with students who are at a similar stage in their learning. We have a mix of nationalities and first languages in the classes. The groups are small and friendly and you will receive lots of individual feedback from your teachers. In addition to your ESOL study, you will also attend classes to improve your skills in ICT and mathematics.

### How will I be assessed?

Examinations.



# Longley's Student Ambassador's

## 8 Top Tips to prepare you for Life @ Longley

**1** When you attend Longley, you will receive an **ID badge** attached to a lanyard make sure to keep this safe as you will need it to enter the school, to print and more.

**2**

Longley makes use of **Google Classroom** for sharing homework and other resources so try to learn how to use it and get the classroom codes from your teachers as early as possible.

Longley also uses **Microsoft Outlook** for emails. This will be one of the main ways for you to communicate with your teachers and vice versa therefore get to grips with it and check it regularly.

**3**

**4**

It is important to keep in mind **Longley opening hours**, since it is quite different from other sixth forms. So, make sure to schedule your time accordingly. On Monday and Friday school is open from 8:00am-3pm but on Tuesday, Wednesday and Thursday school is open from 8:00am-4pm.

**5** Each of your subjects should run **workshops** – extra help sessions with your teachers – that you should strive to attend like normal classes as this will enable you to work through anything you're not confident with your teacher at your own pace.

**6**

Remember to regularly check your **cedar timetable** (in table view) because your timetable is likely to be changed occasionally throughout the academic year.

**7** If, you feel anxious, overwhelmed etc on your first day or afterwards we have a **wellbeing room** where you can go to receive help from qualified councillors or just calm yourself down.

**8**

Longley Sixth Form prides itself on the **support** it offers. The staff encourage independence from the get-go so, so from the beginning of your time at Longley, voice your future ambitions, interests etc. with your teachers and tutors. From personal experience, they will go above and beyond to help you reach these!



# We are Longley Park.





## Longley Park

SIXTH FORM

Horninglow Road, Sheffield S5 6SG

Tel: 0114 262 5757

**[longleypark.ac.uk](http://longleypark.ac.uk)**



**BRIGANTIA**  
LEARNING TRUST

Creating excellence together