



Longley Park

SIXTH FORM ACADEMY

Creating Excellence Together,
through a culture of care

Get Ready For...

LONGLEY PARK SIXTH FORM

Education and Childcare
T-Level:

Early Years Educator

Welcome to Education and childcare T-Level!



Meet the team

Bethan Ellicott
Workplace Assessor

Becky Mower
Early Years Teacher



Lynne Sheehan
Early Years Teacher

Rachel Godwin
Work Placement
Coordinator

Laura Clarke
Early Years Teacher

What will I study?

Examples of subjects you will study:

- The wider context of provision in 0 to 19 childcare and education.
- Child Development 0 to 19
- Reflective practice
- Equality and diversity
- Special educational needs and disability
- Theoretical and philosophical approaches to children's learning and development

What can I do next?

After completing the two-year course, students will have the necessary skills, knowledge and behaviours to successfully progress into work or higher-level study.

T-Level students will gain a 'license to practice' ready to enter the workforce as competent Early Years Practitioners.

Many of our students go on to further education to study several different courses closely linked to childcare and education. Students also have opportunities to be offered job roles in many nursery and school settings in the local area and have the opportunity to start working in a paid role either whilst studying or full time.

What additional opportunities will I have on my course?

As part of the T level programme, students undertaking the Early Years Educator pathway will complete a minimum of 750 hours industry placement.

- In year 1 of the course, placement will take place 1 day a week plus block weeks across the year
- In year 2, placement will be 2 days a week plus block weeks across the year.

This planned time will secure the essential hours needed to complete.

You will have the opportunity for live learning experiences where learning actively in the classroom will take place as practical simulation, such as bathing babies, or using practical resources to design activities that can then be used in placement.

Langley Park
www.langleypark.co.uk



Qualifications & Job Roles

Research Task – This will help you to widen your knowledge and understanding of different job roles within the sector.

What qualifications do you need to be an Early Years Practitioner?

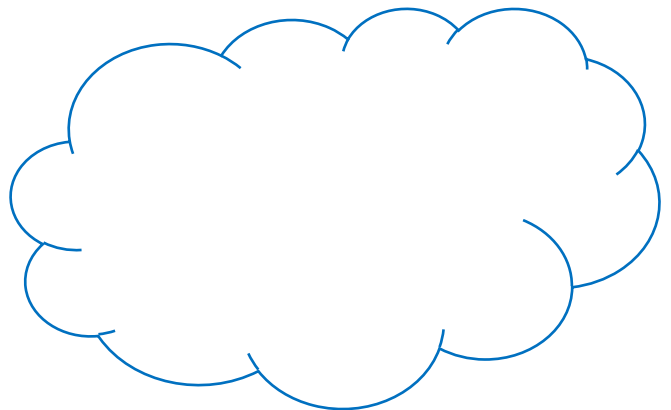
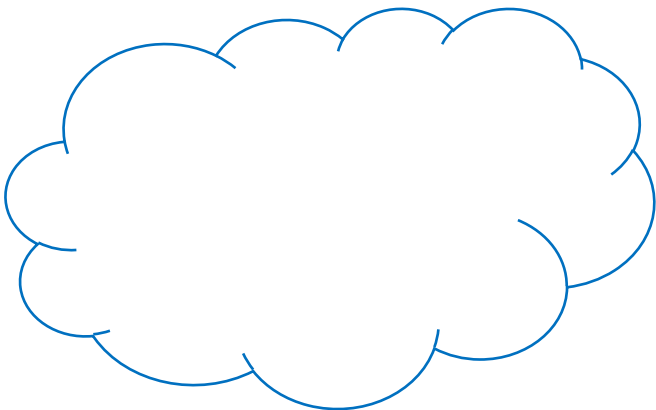
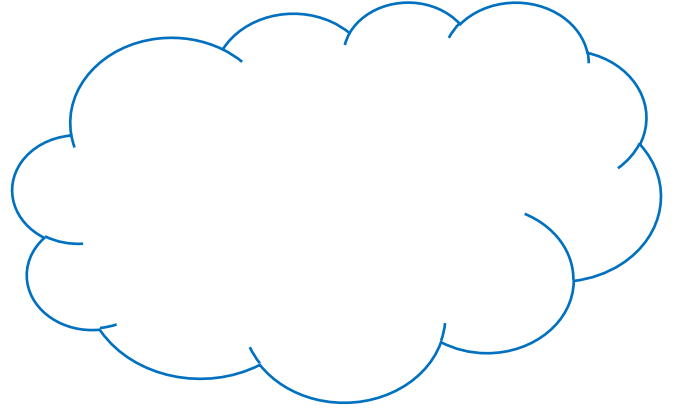
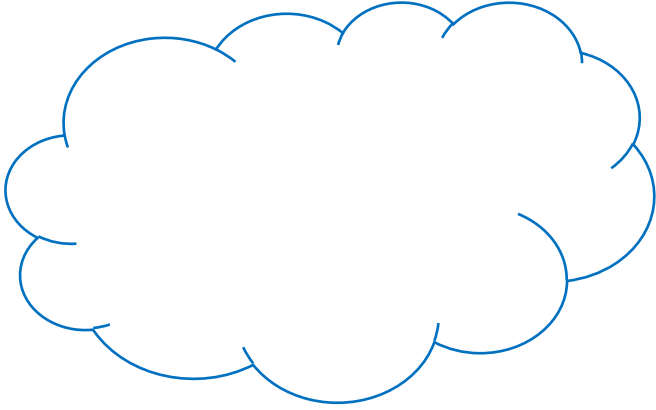


What experience do you think would be good to help prepare for this role?

Now for the following job roles research each one and complete the table below;

Job Role	Overview of what the role involves	Qualifications required
Primary School teacher		
Speech and Language therapist		
Play Therapist		
Nanny		

Add any thoughts you have about starting the course or anything you are thinking about regarding placement etc...



How can I go the extra mile to prepare for my course?

Additional Reading/ Useful Websites:

- [Home - Early Years Matters](#)
- [Physical activity guidelines for children \(under 5 years\) - NHS \(www.nhs.uk\)](#)
- [Healthier Families - Home - NHS \(www.nhs.uk\)](#)
- [Home - World Nursery Rhyme Week](#)
- [The importance of play - YouTube](#)

What else can I do to prepare for starting Sixth Form?

What our students say

“Get ready emotionally, it is different from school!”

“Be confident. Put yourself out of your comfort zone and meet new people; you will meet lots of new people when you get here”

“Start looking at Universities/ Careers now! It will give you a focus when you start at Sixth Form”

“You will need to be more independent and be able to manage your time differently to school. Start building those skills now!”

“I can describe this course in 3 words – Fun Interesting and Engaging!”



Longley Park
SIXTH FORM ACADEMY
Creating Excellence Together,
through a culture of care

Get Ready For...

Additional Opportunities

We offer a variety of different opportunities to enrich your time with us and support your next steps:

- ~A variety of Clubs and Societies through Project You
- ~Employer immersion visits & Trips to employers
- ~Work Experience & Placement
- ~Trips to Universities
- ~Guest Speakers
- ~Leadership through the Student Ambassador Programme
- ~ Independent Learning Centre with IT, books and journals, quiet and group study + Seminar Rooms
- ~Health and Fitness Activities in our onsite gym
- ~Duke of Edinburgh
- ~Career Ready internship Programme
- ~ Access to wellbeing, academic tutorial, and careers support