



Longley Park
SIXTH FORM ACADEMY

NEXT STEP

@Longley Park

longleypark.ac.uk



#PROJECTYOU

WHAT WE OFFER

EXCELLENT FACILITIES TO SUPPORT YOUR LEARNING

Beyond the classroom you can access our Independent Learning Centre, Careers Hub, Learning Support Centre, Wellbeing Room, Gym and IT suites to get the very best sixth form experience.

AN INDEPENDENT STUDY CULTURE

Our Independent Learning Centre gives you access to textbooks and online journals which you can use in our dedicated study spaces and seminar rooms anytime, any day of the week.

A BROAD AND EXCITING CURRICULUM

We offer a fantastic range of qualifications that you can blend to create a personalised study programme.

HIGH QUALIFIED TEACHING STAFF

Our teaching staff are experts in their subjects. They are highly skilled to give you the knowledge, understanding and skills you need to achieve.

ADDITIONAL LEARNING SUPPORT

We have an experienced and dedicated learning support team that treats every student as an individual. We can support students who have a range of needs, including;

- Dyslexia
- Dyspraxia
- Autism or Aspergers Syndrome
- ADHD
- Learning difficulties or disabilities
- Sensory impairments
- Physical difficulties
- Medical conditions

A COMMITMENT TO YOUR SAFETY AND WELLBEING

We know learning cannot happen unless you are supported emotionally and physically. Our staff will support you every step of the way. Our team of specialist wellbeing practitioners, counsellors, and support teams will help you to prioritise your wellbeing to allow you to succeed.

EXTENSIVE ENRICHMENT AND WIDER OPPORTUNITIES

Project You means personalising your experience to see that you can reach your own unique goals and have a fantastic experience along the way. You can access a huge range of wider opportunities to help you explore your own interests and talents, meeting new people along the way.

EXPERT CAREERS ADVICE

Work with our specialist careers team in our dedicated careers hub, Pathways, to support you in accessing your next steps, whether its university, further training or employment.

AN ATMOSPHERE WHERE EVERYONE IS VALUED

You will be part of an inclusive, respectful and richly diverse community which values each and every individual.



PRINCIPAL'S WELCOME

WELCOME TO LONGLLEY PARK!

Longley Park Sixth Form is an exciting mix of ideas, beliefs, cultures and languages - a place where you will be able to develop confidence and thrive. Our team will challenge you to achieve, to be successful and to be prepared for the wider world. At Longley Park you can work with people who share your passion for your chosen subjects and take the opportunities to develop new skills and contribute to our ambitious, caring and vibrant community. Most importantly, we are a place to take control of your future, make your own decisions and shape your next steps.

Choosing where to study after GCSEs is always a big decision. At Longley Park we recognise the importance of choice and believe that your study programme should be designed around your abilities and aspirations. We are committed to providing a well-balanced and challenging curriculum for all students, both inside and outside of the classroom. We have courses for students joining us from a variety of different starting points. No matter what courses you choose to study, you will be joining our community of over 1,000 students.

We believe that each student is an individual, is exceptional, and should be valued. Our staff are passionate about your learning - they want you to be engaged by your subjects, develop your skills and to succeed. By choosing Longley Park as your next step, you are choosing a genuine Sixth Form experience. You will have more independence over your studies and take greater ownership of your studies. Our team will be there all the way to support and guide you when you need it. In return, we expect that you commit to your studies, work hard and embrace our college community.

I look forward to meeting you and hope you choose Longley Park to be part of your future.

Jamie

Keep up to date by following us on social media **@LongleyParkSF** on X, TikTok, Facebook and Instagram.

WE CAN'T WAIT
FOR YOU TO JOIN
US IN SEPTEMBER.



#PROJECTYOU

ENROLMENT

WHAT'S THE

PROCESS?

You will soon receive a letter inviting you for an enrolment appointment. This is where you officially become a student at the Sixth Form.

You will be required to bring a number of documents with you to enrolment, including your exam results. We will use this information to confirm the courses you will study and to make sure you have all the right support in place. You will leave enrolment with your ID badge, meaning you will be an official student at Longley Park! So, keep a look out for the letter and make a note of the date and time.

WHAT HAPPENS NEXT? THESE ARE THE STAGES OF ENROLMENT:



YOUR INVITE

You will be sent an invitation to enrol by post. Please make sure you attend your appointment on time and on the date given.



YOUR PHOTO

Your photo will be taken at Enrolment and your ID will be created on the day, ready for you to collect before you leave. Make sure that you are photo ready, as you will be wearing your ID card all year.



RESULTS SLIPS

Complete all paperwork that has been sent to you and bring it with you to your appointment along with your **results slip**. It is really important that you bring your results slip with you so we can get you on the right course.

NERVOUS?

DON'T WORRY WE'RE
HERE TO SUPPORT YOU.

EXCITED?
SO ARE WE!

WHY

LONGLEY PARK



Our Results

- 98.5% Advanced Level Pass Rate
- 121 passes at A* and Distinction*
- 99% of students went on to a positive destination

Our Key Values

- Support
- Results
- Diversity

Project You

WIDER OPPORTUNITIES

Project You is about more than just academic success. It's about exploring new opportunities and developing key skills which help you stand out from the crowd.

HIGH ACHIEVERS

Your opportunity to take part in university and national mentoring schemes and build a pathway to Russell Group and Oxbridge Universities.

ENRICHMENT

We have a range of exciting activities which you will choose from, from Chess Club to Bollywood, Car Maintenance to Creative Writing. There is so much for you to explore; new interests, talents and meeting new friends.

VOLUNTEERING

We will help you to find relevant opportunities to gain experience and skills, enabling you to access careers. This might be in areas including sport, health and science. You will find out more about the different opportunities available at our volunteering fair.

STUDENT COUNCIL

Our Student Council represent the student body to influence positive changes at Longley Park. Recent successful proposals are gender neutral toilets and the multi-faith contemplation space.

OPPORTUNITIES TO TAKE YOUR LEARNING FURTHER

Your lessons will be enriched with opportunities to take your lessons further, such as mooting in Law and working with the Daily Mirror in English Language.

STUDENT AMBASSADORS

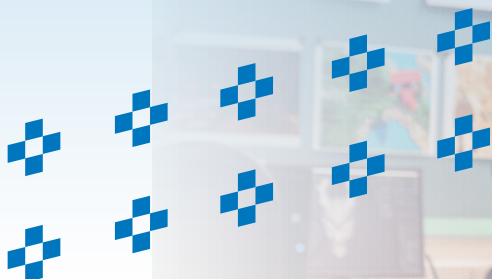
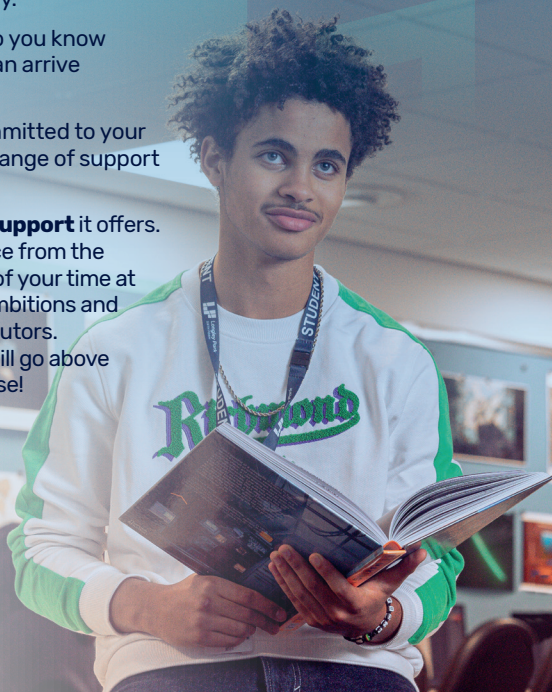
This is open to all students and is a fantastic way to earn money alongside your studies. Ambassadors have a very important role at Longley Park and are positive role models to current and prospective students, in the local community and online.

8

TOP TIPS

FROM OUR STUDENTS

- 1** When you attend Longley Park, you will receive an **ID badge** attached to a lanyard. Make sure to keep this safe as you will need it to enter the sixth form, to print and more.
- 2** Longley Park makes use of **Teams** for sharing homework and other resources so try to learn how to use it and get the classroom codes from your teachers as early as possible.
- 3** Longley Park also uses **Microsoft Outlook** for emails. This will be one of the main ways for you to communicate with your teachers and vice versa therefore get to grips with it and check it regularly.
- 4** It is important to keep in mind **Longley Park opening hours**, since it is quite different from other Sixth Forms. So, make sure to schedule your time accordingly. The sixth form is open Monday to Friday, 8am – 4.30pm.
- 5** Expect to study outside of your lessons. You will have non-contact periods on your timetable where you can use our ILC, seminar rooms and IT suites for private or group study.
- 6** Check your timetable regularly so you know when and where to be and you can arrive ready to learn.
- 7** Everyone in the sixth form is committed to your safety and wellbeing. We have a range of support available should you need us.
- 8** Longley Park prides itself on the **support** it offers. The staff encourage independence from the get-go so, so from the beginning of your time at Longley Park, voice your future ambitions and interests with your teachers and tutors. From personal experience, they will go above and beyond to help you reach these!



ONWARDS &

UPWARDS

Careers guidance

Longley Park is committed to give you the very best in careers education and guidance.

OUR CAREER PROGRAMME

The backbone to our careers programme is your Academic Tutorial. You will meet your tutor in group sessions but also 1-1 meetings. Your tutor is key to giving you up to date careers information and will help you to prepare CVs and applications for whatever direction you want to take whether or not this is University, Apprenticeships, Traineeships or employment. We also have a qualified careers advisor for you to talk to.

UNDERSTANDING THE WORLD OF WORK

Throughout your time with us we will organise talks with employers so you can understand what they are looking for in an employee and the skills you need to develop to make you employable. For example we had over 150 employers meeting students last year ranging from mock interviews, employer question panels to talks from Doctors working in intensive care to Architects building the structures of our future.

VISITING WORKPLACES

We had a vast range of visits last year from behind the scenes exploration at Amazon and Cadbury's World to students working with the Daily Mirror in London. These visits allow you to

gain an good understanding of how industries function and the different roles and responsibilities that make them successful.

STANDING OUT FROM THE CROWD

We believe that we want you to make the very most of opportunities that develop you into an inquisitive learner. This will set you head and shoulders above the rest. The Sixth Form offers a wide range of interesting opportunities from International visits, most recently this has included trips to New York and Berlin to more national experiences such as Edinburgh and London.

PROGRESSION FAIRS

Whether or not you want to go on to uni, take up an Apprenticeship or find a job we put on annual Fairs so that you can connect with the right people. We have a brilliant relationship with all of the local universities and our HE fair had over 40 universities come into to talk with students.

Your future matters to us. Together we can make your aspirations a reality. We have it covered!

#PROJECTYOU



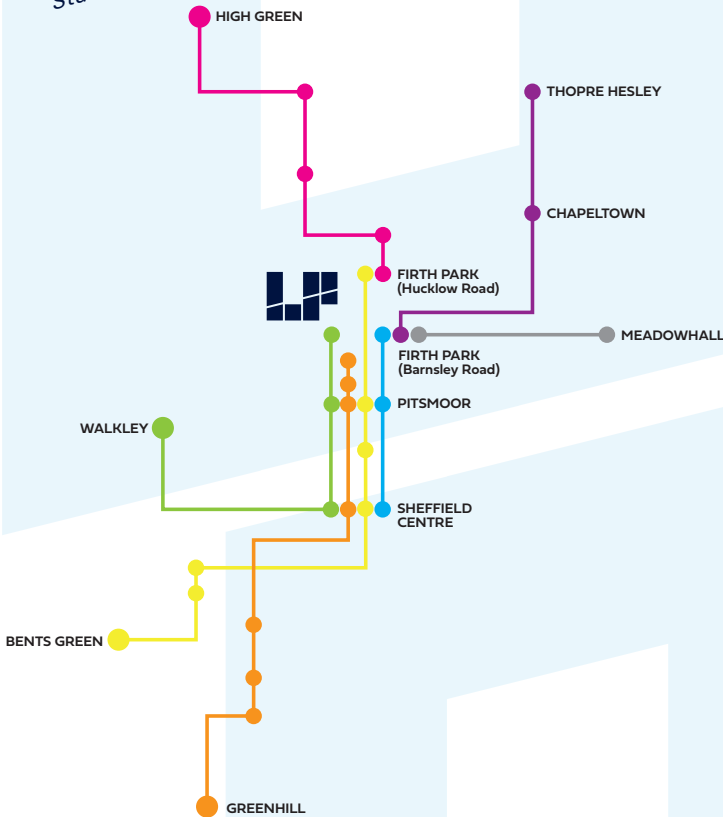
Longley Park
SIXTH FORM ACADEMY

DIRECTIONS

Longley Park Sixth Form is on Barnsley Road, opposite Longley Park itself. There are fantastic bus links into the city centre, across Sheffield and to Meadowhall.

Travel information about services, discounts and concessions available to students attending Longley Park Sixth Form is available from Student Services.

Over the summer check out our **Next Step** area on the website for course tasters and other fun activities. Also follow us on Instagram, Facebook, X and TikTok for all other information.



Bus Routes 1 & 1a
High Green (1)
Chapeltown (1, 1a)
Ecclesfield (1, 1a)
Shiregreen (1, 1a)
Firth Park (1, 1a) Hucklow Road

Bus Routes 2 & 2a
Sheffield Centre
Pitsmoor
Firth Park- Barnsley Road

Bus Route 88
Bents Green
Banner Cross
Hunters Bar
Sheffield
Burngreave
Pitsmoor
Firth Park- Hucklow Road

Bus Routes 95 & 95a
Walkey
Sheffield Centre
Pitsmoor
Firth Park - Barnsley Road

Bus Routes 75, 76 & 76a
Greenhill (76)
Chancet Wood (76a)
Batemoor/Jordanthorpe (75)
Woodseats
Sheffield
Pitsmoor (75/76)
Firvale (75/76)
Firth Park (75/76)

Bus Route 135
Thorpe Hesley
Chapeltown
Firth Park- Barnsley Road

Bus Route 18
Meadowhall
Firth Park

Horninglow Road, Sheffield S5 6SG
Tel: 0114 262 5757 longleypark.ac.uk

